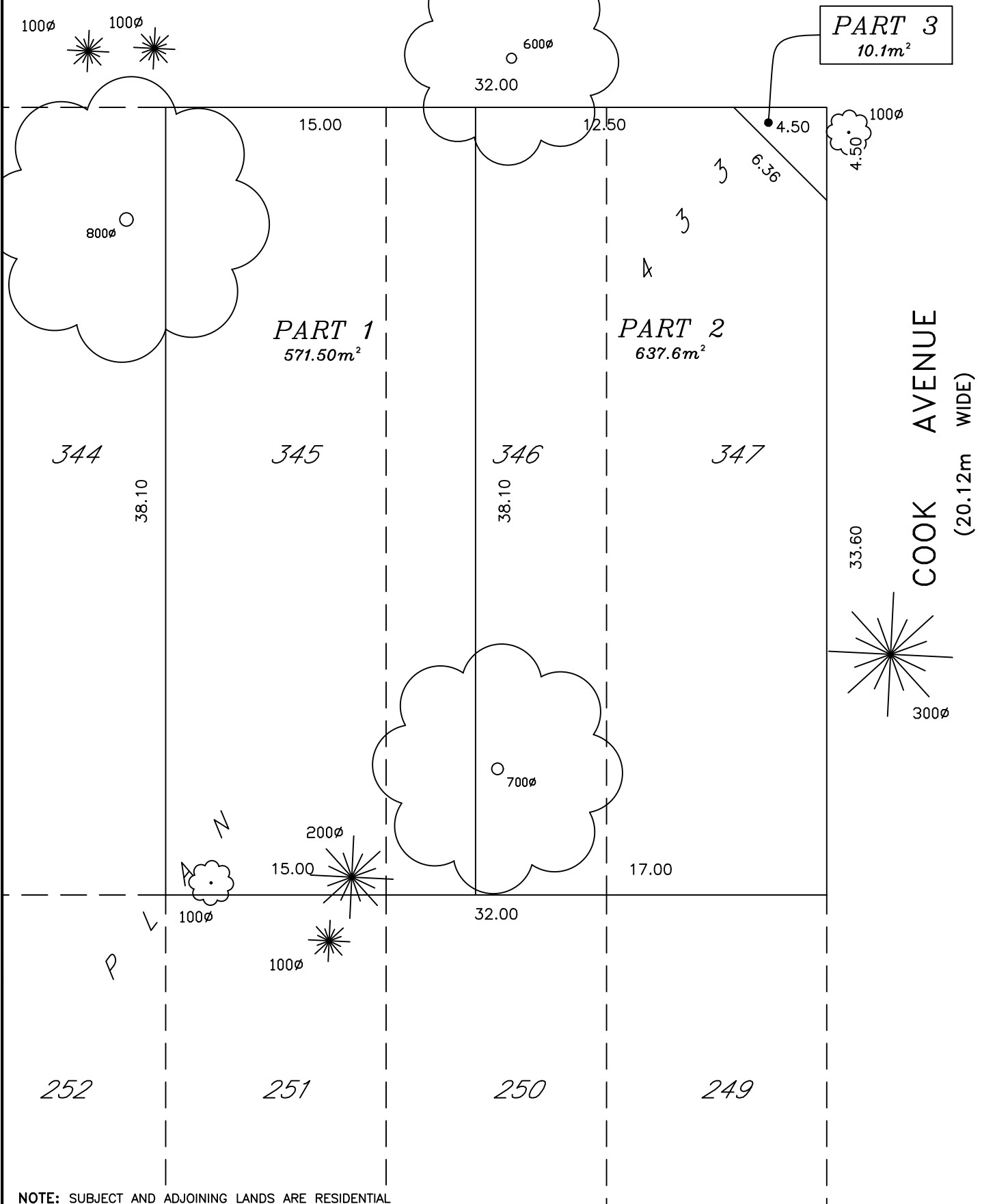


POPLAR AVENUE
(20.12m WIDE)



NOTE: SUBJECT AND ADJOINING LANDS ARE RESIDENTIAL

SKETCH

PREPARED FOR BY-LAW AMENDMENT
 LOTS 345, 346 & 347
 PLAN 433
 IN THE
TOWN OF FORT ERIE
 REGIONAL MUNICIPALITY OF NIAGARA
 SCALE 1 : 250 (METRIC)



"THIS IS NOT AN ORIGINAL COPY UNLESS EMBOSSED WITH SEAL"

CAUTION: THIS IS NOT A PLAN OF SURVEY AND SHALL NOT BE USED EXCEPT FOR THE PURPOSE INDICATED IN THE TITLE BLOCK.

DO NOT SCALE FROM THIS DRAWING.
 ALL MEASUREMENTS ARE +/- MEASUREMENTS.

© COPYRIGHT 2020
 THE REPRODUCTION, ALTERATION OR USE OF THIS SKETCH, IN WHOLE OR IN PART WITHOUT THE EXPRESS WRITTEN PERMISSION OF CHAMBERS AND ASSOCIATES SURVEYING LTD. IS STRICTLY PROHIBITED.

DECEMBER 15, 2020
 DATE

DONALD G. CHAMBERS, B. Sc., O.L.S.

CHAMBERS AND ASSOCIATES
 SURVEYING LTD