

# SKETCH

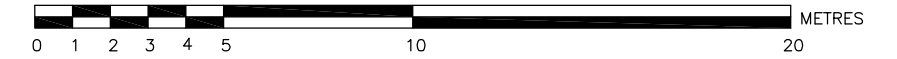
SHOWING TOPOGRAPHICAL INFORMATION

LOTS 79, 80 & 81  
PART OF LOTS 71, 72 & 73  
PART OF UNNAMED PUBLIC HIGHWAY  
PLAN 460

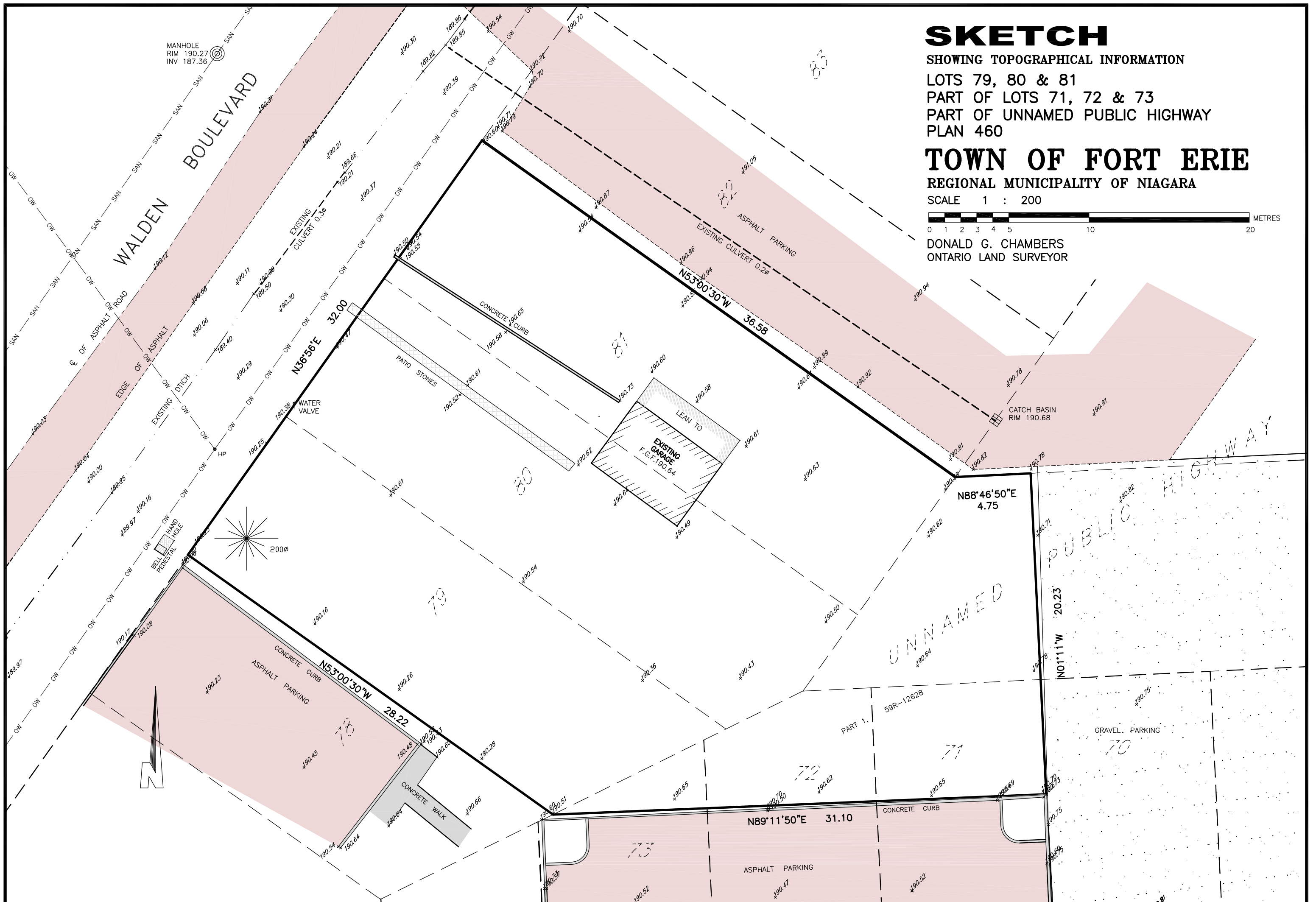
## TOWN OF FORT ERIE

REGIONAL MUNICIPALITY OF NIAGARA

SCALE 1 : 200



DONALD G. CHAMBERS  
ONTARIO LAND SURVEYOR



### METRIC NOTE

DISTANCES SHOWN ON THIS PLAN ARE IN METRES AND CAN BE CONVERTED TO FEET BY DIVIDING BY 0.3048.

### CAUTION

THIS IS NOT A PLAN OF SURVEY AND SHALL NOT BE USED EXCEPT FOR THE PURPOSE INDICATED IN THE TITLE BLOCK

### BENCHMARK

ELEVATIONS HEREON ARE GEODETIC AND WERE DERIVED FROM THE TOPNET RTK NETWORK, NAD83 CSRS, VERSION 3, EPOC 2010.

### © COPYRIGHT 2021

THE REPRODUCTION, ALTERATION OR USE OF THIS SKETCH IN WHOLE OR IN PART, WITHOUT THE EXPRESS WRITTEN PERMISSION OF CHAMBERS AND ASSOCIATES SURVEYING LTD., IS STRICTLY PROHIBITED.

### NOTE

THIS SKETCH IS PREPARED FROM AN ACTUAL FIELD SURVEY.

**"THIS IS NOT AN ORIGINAL COPY UNLESS EMBOSSED WITH SEAL."**

### LEGEND

CB	DENOTES	EXISTING GROUND ELEVATION
MH	"	CATCH BASIN
WV	"	MANHOLE
HP	"	WATER VALVE
—	"	HYDRO POLE
—	"	OVERHEAD UTILITY LINE
—	"	SANITARY SEWER
—	"	CONFONER TREE
—	"	ASPHALT SURFACE
—	"	GRAVEL SURFACE

FEBRUARY 18, 2021

DATE

*Donald G. Chambers*  
DONALD G. CHAMBERS, B. Sc., O.L.S.

## CHAMBERS AND ASSOCIATES SURVEYING LTD

12 THOROLD ROAD EAST  
WELLAND ONTARIO  
L3C 3T2

(905) 735-7841 / 735-7844  
FAX (905) 735-7333  
www.cas1-surveying.com

DRAWN BY: D M S MSCAD: 14027-6\_MS DWG: 14027-6\_TOPO FILE No: 14-27-6