

20:12 WIDE

NIAGH ROAD ALLOWANCE BETWEEN CONCESSIONS 2 AND 3 L. E. ROAD

303.07

5.95

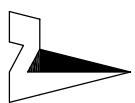
81.88

77.36

1.45

PART 3

(1.45 road widening & 4.5x4.5 daylighting) AREA=0.013ha±

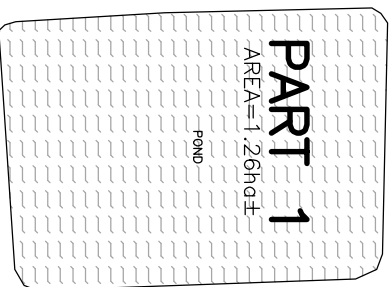


CENTRALIA AVENUE

152.29

PART 1

AREA=1.26ha±



SHED 35m² (to be removed or re-located)

79.38

R E S I D E N T I A L

A G R I C U L T U R A L

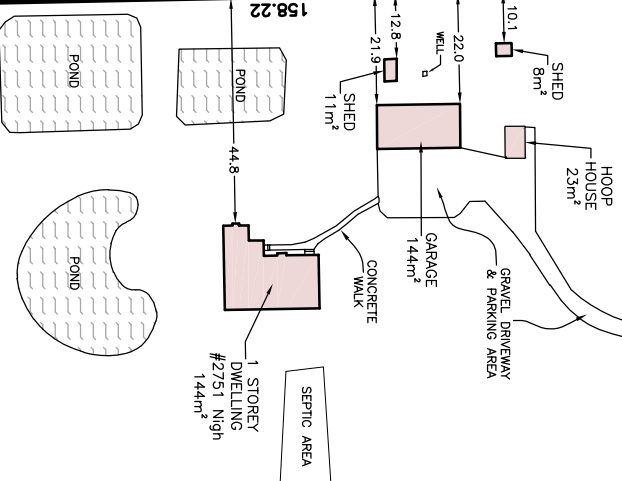
LOT 16

20.12 WIDE

302.98

PART 2

AREA=4.79ha±



CONCESSION

SIX MILE CREEK

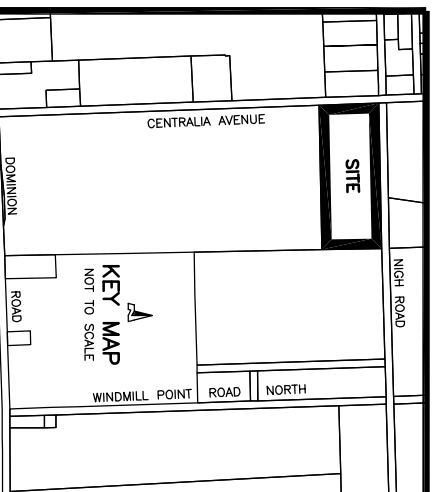
LAKE ERIE

158.22

R E S I D E N T I A L

CONCESSION 2 LAKE ERIE

LOT 16



SKETCH

PREPARED FOR SEVERANCE APPLICATION
PART OF LOT 16
CONCESSION 2 LAKE ERIE
GEOGRAPHIC TOWNSHIP OF BERTIE
IN THE
TOWN OF FORT ERIE
REGIONAL MUNICIPALITY OF NIAGARA
SCALE 1 : 1500 (METRIC)

NOTE: THIS SKETCH IS PREPARED FROM COMPILED AND CALCULATED INFORMATION, NOT FROM AN ACTUAL SURVEY. DO NOT SCALE FROM THIS DRAWING. ALL MEASUREMENTS ARE +/- MEASUREMENTS.

CAUTION: THIS IS NOT A PLAN OF SURVEY AND SHALL NOT BE USED EXCEPT FOR THE PURPOSE INDICATED IN THE TITLE BLOCK. "THIS IS NOT AN ORIGINAL COPY UNLESS EMBOSSED WITH SEAL."

© COPYRIGHT 2021

THE REPRODUCTION, ALTERATION OR USE OF THIS SKETCH, IN WHOLE OR IN PART WITHOUT THE EXPRESS WRITTEN PERMISSION OF CHAMBERS AND ASSOCIATES SURVEYING LTD. IS STRICTLY PROHIBITED.

DATE **APRIL 20, 2021** *David Chambers*
DOWNS G. CHAMBERS, B. Sc., O.L.S.

CHAMBERS AND ASSOCIATES
SURVEYING LTD

12 THOROLD ROAD EAST
WELAND ONTARIO
L9C 3T2
DWG **15022-2_SEV** FILE **15-22-2**
(905) 735-7841 / 735-7844
FAX (905) 735-7333
www.casf-surveying.com