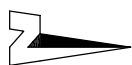
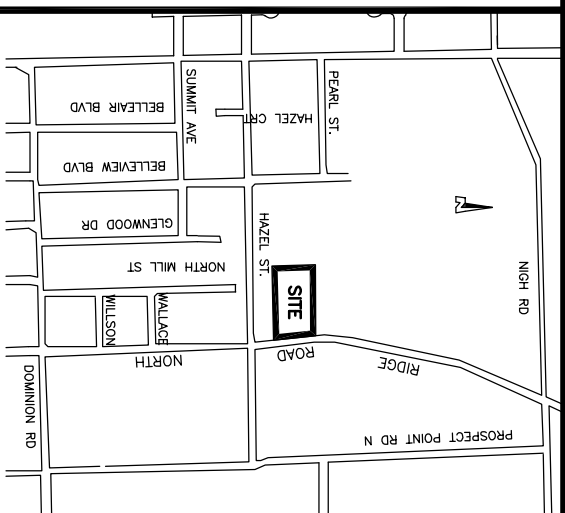


LOT CONGRESSION

RESIDENTIAL



RIDGE ROAD NORTH
IRREGULAR WIDTH



KEY MAP

NOT TO SCALE

SKETCH

PREPARED FOR SEVERANCE APPLICATION

PART OF LOT 23
CONGRESSION 2 LAKE ERIE
GEOGRAPHIC TOWNSHIP OF BERTIE
IN THE
TOWN OF FORT ERIE
REGIONAL MUNICIPALITY OF NIAGARA
SCALE 1 : 800 (METRIC)

NOTE: THIS SKETCH IS PREPARED FROM COMPILED AND CALCULATED INFORMATION, NOT FROM AN ACTUAL SURVEY. DO NOT SCALE FROM THIS DRAWING.

ALL MEASUREMENTS ARE +/- MEASUREMENTS.

"THIS IS NOT AN ORIGINAL COPY UNLESS EMBOSSED WITH SEAL."

CAUTION: THIS IS NOT A PLAN OF SURVEY AND SHALL NOT BE USED EXCEPT FOR THE PURPOSE INDICATED IN THE TITLE BLOCK.

© COPYRIGHT 2022

THE REPRODUCTION, ALTERATION OR USE OF THIS SKETCH, IN WHOLE OR IN PART WITHOUT THE EXPRESS WRITTEN PERMISSION OF CHAMBERS AND ASSOCIATES SURVEYING LTD. IS STRICTLY PROHIBITED.

MAY 6, 2022

DATE

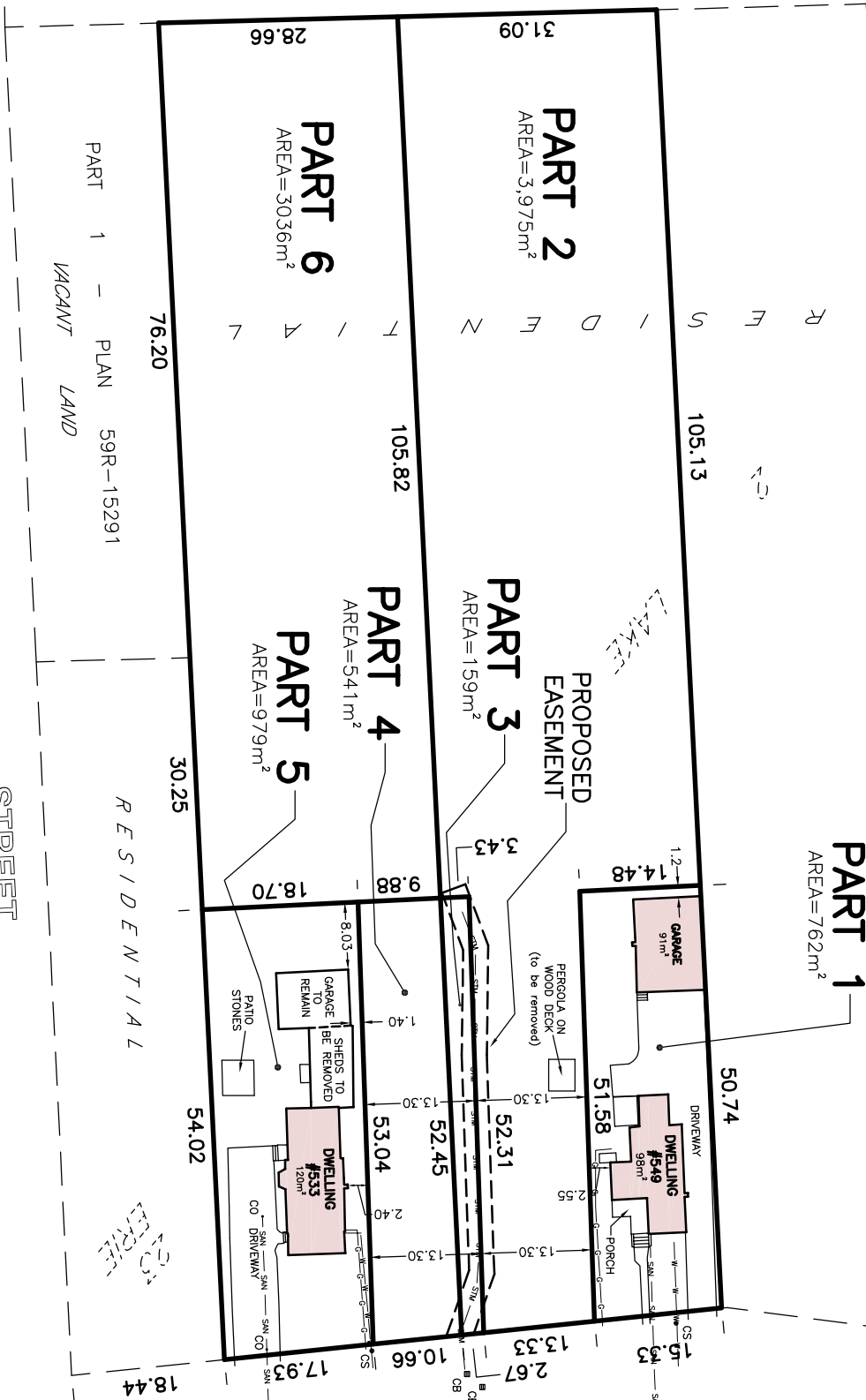
Tom Chambers
BONARD G. CHAMBERS, B. Sc., O.L.S.

CHAMBERS AND ASSOCIATES
SURVEYING LTD

12 THOROLD ROAD EAST
WELAND ONTARIO
L9C 3T2
(905) 735-7841 / 735-7844
FAX (905) 735-7333
www.casr-surveying.com

DWG 21039_SEV3 FILE 21-39

LOT 42
PART 1
VACANT LAND
PLAN 59R-16798
PLAN 500



HAZEL STREET

NOTES:

1. Parts 2 and 3 to be severed from Part 1.
2. Parts 4 and 6 to be severed from Part 1.
3. Parts 3 and 4 to merge in title.
4. Parts 2 and 6 to merge in title.
5. Proposed easement to the Town of Fort Erie to be 3m wide (1.5m either side of existing storm sewer) and end 3m past west end of pipe