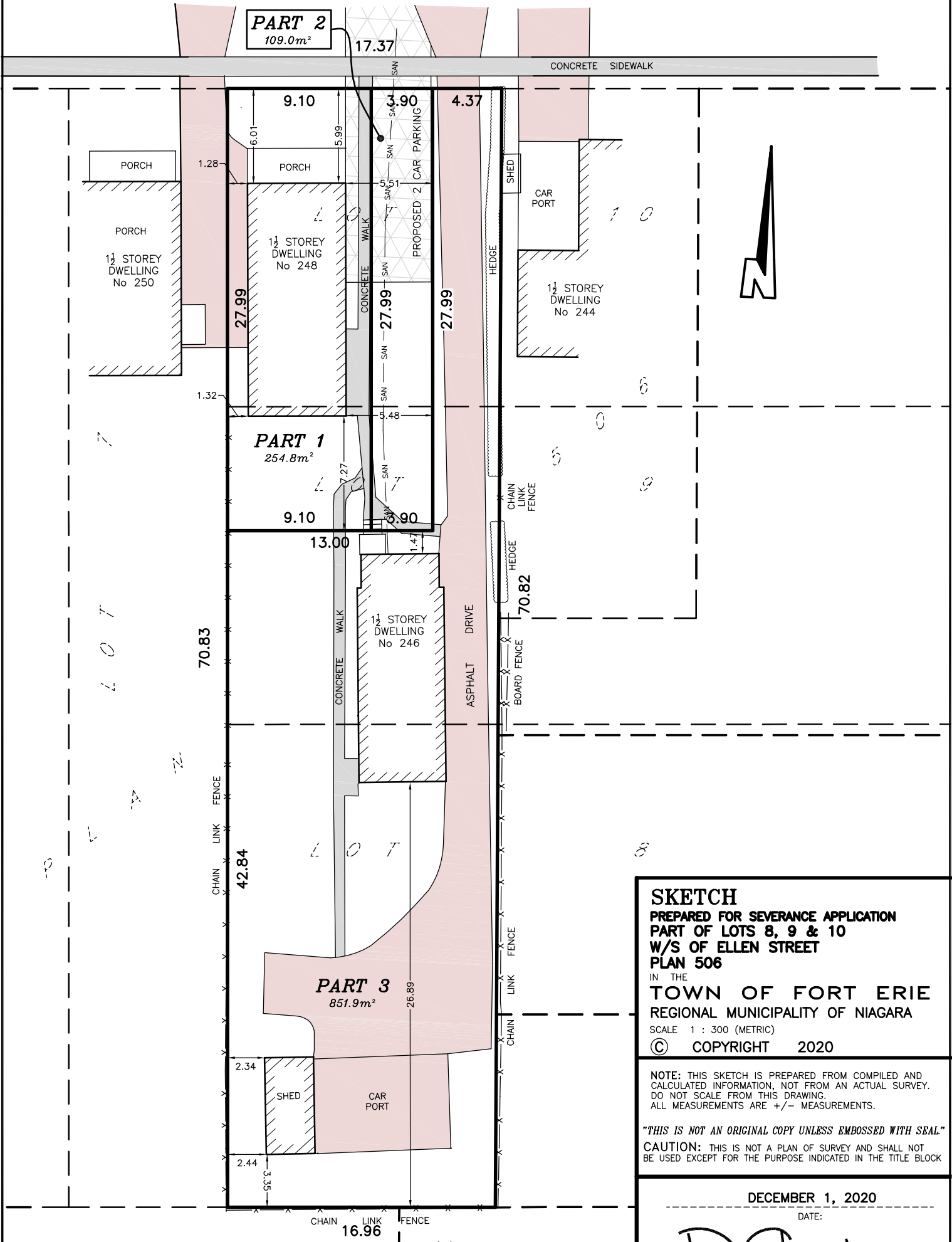



HENRIETTA STREET

(20.12m WIDE)



SKETCH
PREPARED FOR SEVERANCE APPLICATION
PART OF LOTS 8, 9 & 10
W/S OF ELLEN STREET
PLAN 506
 IN THE
TOWN OF FORT ERIE
 REGIONAL MUNICIPALITY OF NIAGARA
 SCALE 1 : 300 (METRIC)
 © COPYRIGHT 2020

NOTE: THIS SKETCH IS PREPARED FROM COMPILED AND CALCULATED INFORMATION, NOT FROM AN ACTUAL SURVEY. DO NOT SCALE FROM THIS DRAWING. ALL MEASUREMENTS ARE +/- MEASUREMENTS.
 "THIS IS NOT AN ORIGINAL COPY UNLESS EMBOSSED WITH SEAL"
 CAUTION: THIS IS NOT A PLAN OF SURVEY AND SHALL NOT BE USED EXCEPT FOR THE PURPOSE INDICATED IN THE TITLE BLOCK

DECEMBER 1, 2020
 DATE:

 DONALD G. CHAMBERS, B. Sc., O.L.S.

THE REPRODUCTION, ALTERATION OR USE OF THIS SKETCH, IN WHOLE OR IN PART WITHOUT THE EXPRESS WRITTEN PERMISSION OF CHAMBERS AND ASSOCIATES SURVEYING LTD. IS STRICTLY PROHIBITED.

CHAMBERS AND ASSOCIATES SURVEYING LTD
 12 THOROLD ROAD EAST (905) 735-7841 / 735-7844
 WELLAND ONTARIO FAX (905) 735-7333
 L3C 3T2 www.casl-surveying.com
 DWG 07065-1_SK FILE 07-65-1

NOTE: SUBJECT AND ADJOINING LANDS ARE RESIDENTIAL
 REVISED: JANUARY 14, 2021