



**PUBLIC INFORMATION OPEN HOUSE
PROPOSED DRAFT PLAN OF CONDOMINIUM (COMMON ELEMENTS)
SOUTH COAST VILLAGE PHASE 3
0-15199 RIDGEWAY ROAD
OWNER: MARZ HOMES (CRYSTAL BEACH) INC.
AGENT: STEPHEN FRASER, A.J. CLARKE AND ASSOCIATES**

PROPOSAL:

The applicant is proposing a Common Elements Condominium consisting of private roads, parking areas and recreation open space for a 73 unit residential development on the subject lands.

The subject property is within the urban boundary and is currently designated Urban Residential in Town's Official Plan. The lands are currently zoned Residential Multiple 1 (RM1-694) zone in accordance with Zoning By-law No. 129-90, as amended by By-law No. 2020-38.

We would like to hear from you: We invite you to attend an evening Public Open House meeting to learn more about this proposal. We welcome you to attend and take advantage of the opportunity to review the proposal, identify issues, and provide additional information. Residents can participate in a Zoom Public Open House meeting two different ways:



1. Send your comments via e-mail to Anamika Dilwaria, Senior Development Planner (adilwaria@forterie.ca) who will provide them to Council.
2. Participate in the Zoom meeting (audio/video via web or by telephone) by sending an email to Anamika Dilwaria, Senior Development Planner (adilwaria@forterie.ca) to receive information on joining the Zoom meeting.

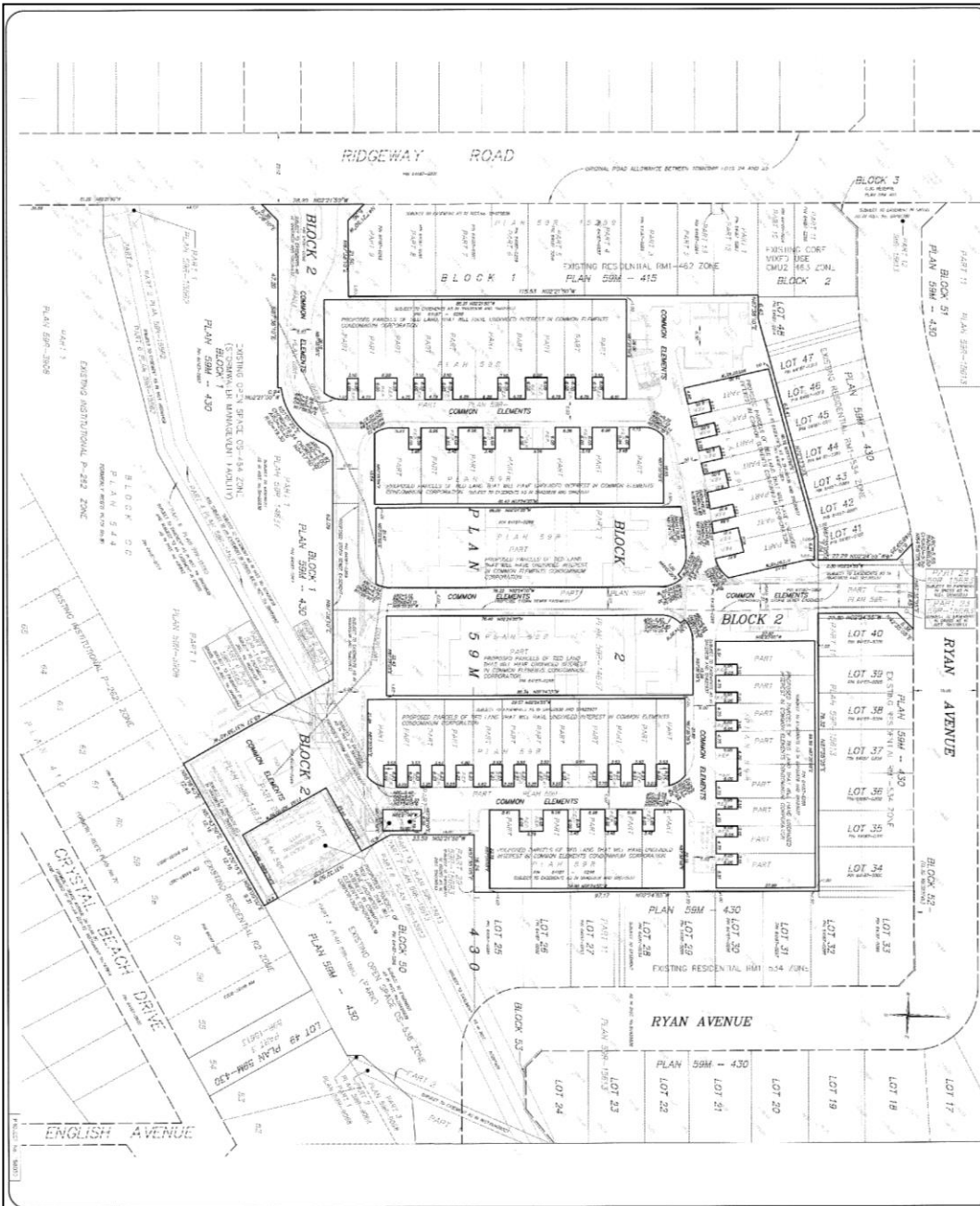
The meeting will be streamed live at www.youtube.com/townofforterie or click on the YouTube icon on the home page of the Town's website (www.forterie.ca).

Details for Public Open House are as follows:

Date: Monday, June 22, 2020
Time: 5:00 P.M.
Location: This is virtual meeting

For additional information, please contact
Anamika Dilwaria, MCIP, RPP, Senior Development Planner at 905-871-1600 ext. 2507
or at adilwaria@forterie.ca

SCHEDULE 1



DRAFT PLAN OF
South Coast Village
Condominiums
 BEING A PROPOSED COMMON ELEMENTS CONDOMINIUM COMPONENT OF
BLOCK 2 - PLAN 59M-430
TOWN OF FORT ERIE
 REGIONAL MUNICIPALITY OF NIAGARA
 SCALE 1:500
 MICHAEL P. MALIN O.L.S.

NOTE: THIS IS A DRAFT PLAN AND IS SUBJECT TO REVIEW AND APPROVAL BY THE NIAGARA REGIONAL MUNICIPALITY AND THE TOWN OF FORT ERIE.
LEGEND: DIMENSIONS SHOWN ON THIS PLAN ARE IN METERS UNLESS OTHERWISE SPECIFIED.
PER CHAPTER P13 R.S.O. 1990 SECTION 51(17) OF THE PLANNING ACT AND SECTION 9 OF THE CONDOMINIUM ACT (1998)
 1. SHOWN ON PLAN
 2. SHOWN ON PLAN
 3. SHOWN ON PLAN
 4. SHOWN ON PLAN
 5. SHOWN ON PLAN
 6. SHOWN ON PLAN
 7. SHOWN ON PLAN
 8. SHOWN ON PLAN
 9. SHOWN ON PLAN
 10. SHOWN ON PLAN
 11. SHOWN ON PLAN
 12. SHOWN ON PLAN
 13. SHOWN ON PLAN
 14. SHOWN ON PLAN
 15. SHOWN ON PLAN
 16. SHOWN ON PLAN
 17. SHOWN ON PLAN
 18. SHOWN ON PLAN
 19. SHOWN ON PLAN
 20. SHOWN ON PLAN
 21. SHOWN ON PLAN
 22. SHOWN ON PLAN
 23. SHOWN ON PLAN
 24. SHOWN ON PLAN
 25. SHOWN ON PLAN
 26. SHOWN ON PLAN
 27. SHOWN ON PLAN
 28. SHOWN ON PLAN
 29. SHOWN ON PLAN
 30. SHOWN ON PLAN
 31. SHOWN ON PLAN
 32. SHOWN ON PLAN
 33. SHOWN ON PLAN
 34. SHOWN ON PLAN
 35. SHOWN ON PLAN
 36. SHOWN ON PLAN
 37. SHOWN ON PLAN
 38. SHOWN ON PLAN
 39. SHOWN ON PLAN
 40. SHOWN ON PLAN
 41. SHOWN ON PLAN
 42. SHOWN ON PLAN
 43. SHOWN ON PLAN
 44. SHOWN ON PLAN
 45. SHOWN ON PLAN
 46. SHOWN ON PLAN
 47. SHOWN ON PLAN
 48. SHOWN ON PLAN
 49. SHOWN ON PLAN
 50. SHOWN ON PLAN
 51. SHOWN ON PLAN
 52. SHOWN ON PLAN
 53. SHOWN ON PLAN
 54. SHOWN ON PLAN
 55. SHOWN ON PLAN
 56. SHOWN ON PLAN
 57. SHOWN ON PLAN
 58. SHOWN ON PLAN
 59. SHOWN ON PLAN
 60. SHOWN ON PLAN
 61. SHOWN ON PLAN
 62. SHOWN ON PLAN
 63. SHOWN ON PLAN
 64. SHOWN ON PLAN
 65. SHOWN ON PLAN
 66. SHOWN ON PLAN
 67. SHOWN ON PLAN
 68. SHOWN ON PLAN
 69. SHOWN ON PLAN
 70. SHOWN ON PLAN
 71. SHOWN ON PLAN
 72. SHOWN ON PLAN
 73. SHOWN ON PLAN
 74. SHOWN ON PLAN
 75. SHOWN ON PLAN
 76. SHOWN ON PLAN
 77. SHOWN ON PLAN
 78. SHOWN ON PLAN
 79. SHOWN ON PLAN
 80. SHOWN ON PLAN
 81. SHOWN ON PLAN
 82. SHOWN ON PLAN
 83. SHOWN ON PLAN
 84. SHOWN ON PLAN
 85. SHOWN ON PLAN
 86. SHOWN ON PLAN
 87. SHOWN ON PLAN
 88. SHOWN ON PLAN
 89. SHOWN ON PLAN
 90. SHOWN ON PLAN
 91. SHOWN ON PLAN
 92. SHOWN ON PLAN
 93. SHOWN ON PLAN
 94. SHOWN ON PLAN
 95. SHOWN ON PLAN
 96. SHOWN ON PLAN
 97. SHOWN ON PLAN
 98. SHOWN ON PLAN
 99. SHOWN ON PLAN
 100. SHOWN ON PLAN

LAND USE SCHEDULE:
 44 APPLICABLE ZONING BY-LAW AND/OR ZONING BY-LAW
 45 APPLICABLE ZONING BY-LAW AND/OR ZONING BY-LAW
 46 APPLICABLE ZONING BY-LAW AND/OR ZONING BY-LAW
 47 APPLICABLE ZONING BY-LAW AND/OR ZONING BY-LAW
 48 APPLICABLE ZONING BY-LAW AND/OR ZONING BY-LAW
 49 APPLICABLE ZONING BY-LAW AND/OR ZONING BY-LAW
 50 APPLICABLE ZONING BY-LAW AND/OR ZONING BY-LAW
 51 APPLICABLE ZONING BY-LAW AND/OR ZONING BY-LAW
 52 APPLICABLE ZONING BY-LAW AND/OR ZONING BY-LAW
 53 APPLICABLE ZONING BY-LAW AND/OR ZONING BY-LAW
 54 APPLICABLE ZONING BY-LAW AND/OR ZONING BY-LAW
 55 APPLICABLE ZONING BY-LAW AND/OR ZONING BY-LAW
 56 APPLICABLE ZONING BY-LAW AND/OR ZONING BY-LAW
 57 APPLICABLE ZONING BY-LAW AND/OR ZONING BY-LAW
 58 APPLICABLE ZONING BY-LAW AND/OR ZONING BY-LAW
 59 APPLICABLE ZONING BY-LAW AND/OR ZONING BY-LAW
 60 APPLICABLE ZONING BY-LAW AND/OR ZONING BY-LAW
 61 APPLICABLE ZONING BY-LAW AND/OR ZONING BY-LAW
 62 APPLICABLE ZONING BY-LAW AND/OR ZONING BY-LAW
 63 APPLICABLE ZONING BY-LAW AND/OR ZONING BY-LAW
 64 APPLICABLE ZONING BY-LAW AND/OR ZONING BY-LAW
 65 APPLICABLE ZONING BY-LAW AND/OR ZONING BY-LAW
 66 APPLICABLE ZONING BY-LAW AND/OR ZONING BY-LAW
 67 APPLICABLE ZONING BY-LAW AND/OR ZONING BY-LAW
 68 APPLICABLE ZONING BY-LAW AND/OR ZONING BY-LAW
 69 APPLICABLE ZONING BY-LAW AND/OR ZONING BY-LAW
 70 APPLICABLE ZONING BY-LAW AND/OR ZONING BY-LAW
 71 APPLICABLE ZONING BY-LAW AND/OR ZONING BY-LAW
 72 APPLICABLE ZONING BY-LAW AND/OR ZONING BY-LAW
 73 APPLICABLE ZONING BY-LAW AND/OR ZONING BY-LAW
 74 APPLICABLE ZONING BY-LAW AND/OR ZONING BY-LAW
 75 APPLICABLE ZONING BY-LAW AND/OR ZONING BY-LAW
 76 APPLICABLE ZONING BY-LAW AND/OR ZONING BY-LAW
 77 APPLICABLE ZONING BY-LAW AND/OR ZONING BY-LAW
 78 APPLICABLE ZONING BY-LAW AND/OR ZONING BY-LAW
 79 APPLICABLE ZONING BY-LAW AND/OR ZONING BY-LAW
 80 APPLICABLE ZONING BY-LAW AND/OR ZONING BY-LAW
 81 APPLICABLE ZONING BY-LAW AND/OR ZONING BY-LAW
 82 APPLICABLE ZONING BY-LAW AND/OR ZONING BY-LAW
 83 APPLICABLE ZONING BY-LAW AND/OR ZONING BY-LAW
 84 APPLICABLE ZONING BY-LAW AND/OR ZONING BY-LAW
 85 APPLICABLE ZONING BY-LAW AND/OR ZONING BY-LAW
 86 APPLICABLE ZONING BY-LAW AND/OR ZONING BY-LAW
 87 APPLICABLE ZONING BY-LAW AND/OR ZONING BY-LAW
 88 APPLICABLE ZONING BY-LAW AND/OR ZONING BY-LAW
 89 APPLICABLE ZONING BY-LAW AND/OR ZONING BY-LAW
 90 APPLICABLE ZONING BY-LAW AND/OR ZONING BY-LAW
 91 APPLICABLE ZONING BY-LAW AND/OR ZONING BY-LAW
 92 APPLICABLE ZONING BY-LAW AND/OR ZONING BY-LAW
 93 APPLICABLE ZONING BY-LAW AND/OR ZONING BY-LAW
 94 APPLICABLE ZONING BY-LAW AND/OR ZONING BY-LAW
 95 APPLICABLE ZONING BY-LAW AND/OR ZONING BY-LAW
 96 APPLICABLE ZONING BY-LAW AND/OR ZONING BY-LAW
 97 APPLICABLE ZONING BY-LAW AND/OR ZONING BY-LAW
 98 APPLICABLE ZONING BY-LAW AND/OR ZONING BY-LAW
 99 APPLICABLE ZONING BY-LAW AND/OR ZONING BY-LAW
 100 APPLICABLE ZONING BY-LAW AND/OR ZONING BY-LAW

AJ Clark and Associates Ltd.
 25 MAIN STREET, SUITE 200
 FORT ERIE, ONTARIO L2A 1R1
 TEL: 905-259-2288
 FAX: 905-259-2289
 WWW.AJCLARK.COM