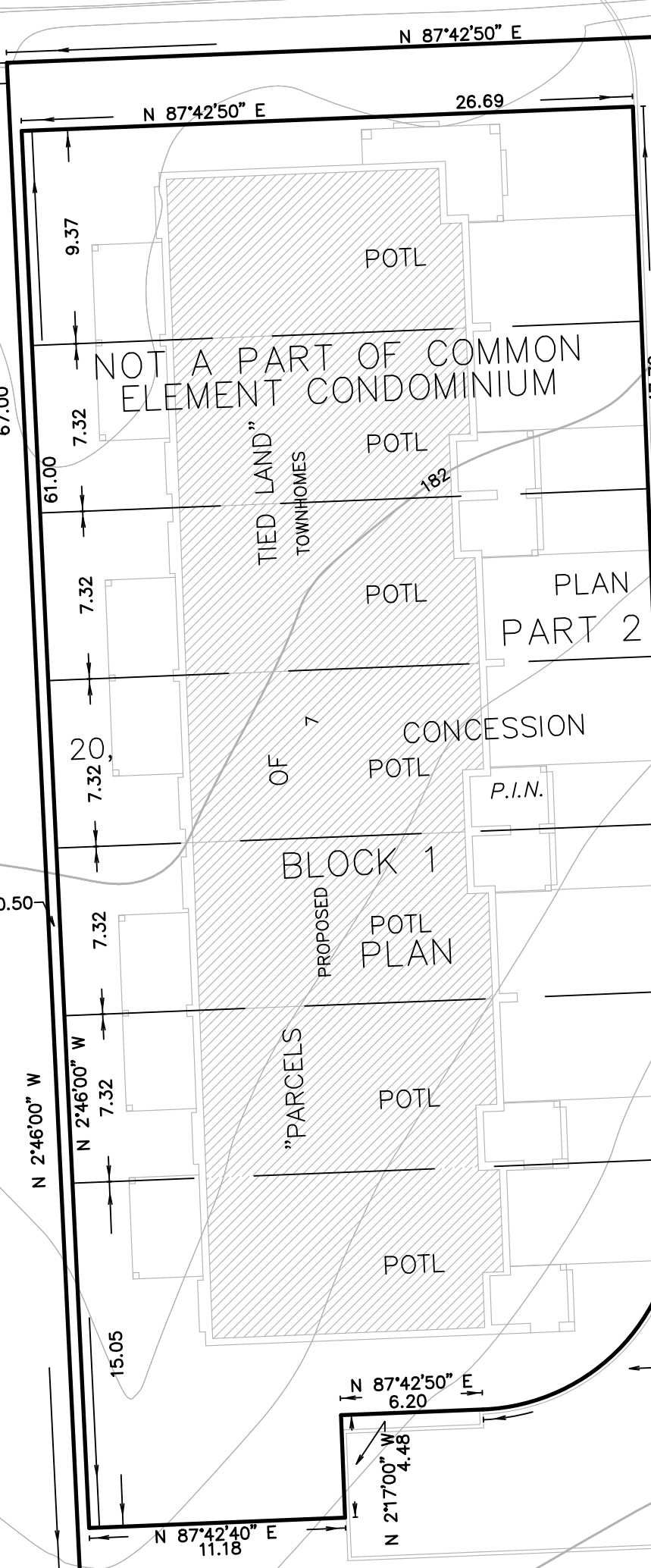


DOMINION ROAD REGIONAL ROAD No. 1 (DEPOSIT PLAN 299 (P-1970-1))
 (ORIGINAL ROAD ALLOWANCE BETWEEN CONCESSIONS 1 & 2 - LAKE ERIE)

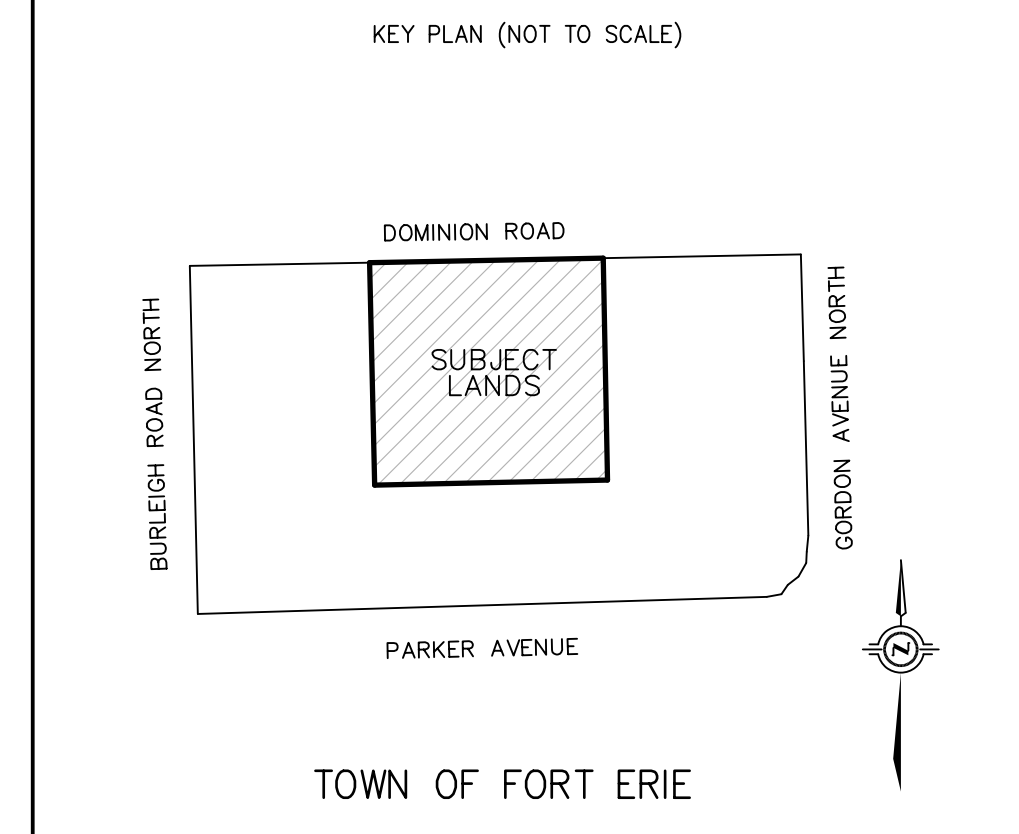
P.I.N. 64197-0002(LT)
 182

N 87°42'50" E 54.86



COMMON ELEMENT

PART 1
 PLAN 59R- 15880
 P.I.N. 64198-0203(LT)
 "RESIDENTIAL"



ADDITIONAL INFORMATION REQUIRED UNDER SECTION 51(17) OF THE PLANNING ACT AND UNDER SECTION 9 OF THE CONDOMINIUM ACT 1998

- (A)-AS SHOWN ON DRAFT PLAN
- (B)-AS SHOWN ON DRAFT PLAN
- (C)-AS SHOWN ON DRAFT AND KEY PLANS
- (D)-PROPOSED RESIDENTIAL DEVELOPMENT (WILL BE 13 TOWNHOUSE DWELLINGS ON PARCELS OF TIED LAND WITH A COMMON INTEREST IN THE COMMON ELEMENTS CONDOMINIUM)
- (E)-AS SHOWN ON DRAFT PLAN
- (F)-AS SHOWN ON DRAFT PLAN
- (G)-AS SHOWN ON DRAFT PLAN
- (H)-MUNICIPAL
- (I)-CLAY LOAM
- (J)-AS SHOWN ON DRAFT PLAN
- (K)-ALL MUNICIPAL SERVICES AVAILABLE
- (L)-NONE

DRAFT PLAN OF COMMON ELEMENT CONDOMINIUM OF
PART OF LOT 20
CONCESSION 1, LAKE ERIE
 TOWN OF FORT ERIE
 REGIONAL MUNICIPALITY OF NIAGARA

SCALE 1 : 250

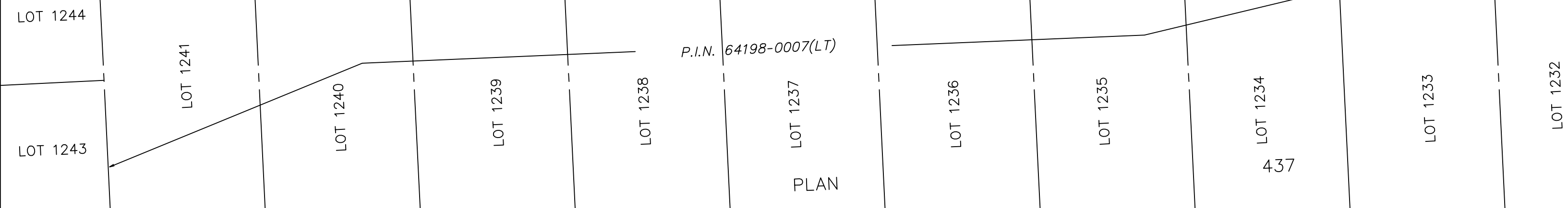
J.D. BARNES LIMITED
METRIC DISTANCES AND/OR COORDINATES SHOWN ON THIS PLAN ARE IN METRES AND CAN BE CONVERTED TO FEET BY DIVIDING BY 0.3048.

SURVEYOR'S CERTIFICATE
 I CERTIFY THAT:
 1. THE BOUNDARIES OF THE LAND TO BE SUBDIVIDED ARE CORRECTLY SHOWN
 DATE: MARCH 13, 2023.

 ALLAN HEYWOOD
 ONTARIO LAND SURVEYOR

OWNER'S CERTIFICATE
 I HEREBY AUTHORIZE J.D. BARNES LIMITED TO SUBMIT THIS PLAN TO THE TOWN OF FORT ERIE FOR THEIR APPROVAL.
 DATE: _____
 MUSTAFA ALHAYANI
 (I HAVE THE AUTHORITY TO BIND THE CORPORATION)
ALPHA CAPITAL MANAGEMENT

BURLEIGH ROAD NORTH



J.D. BARNES LIMITED
 SURVEYING MAPPING GIS
 LAND INFORMATION SPECIALISTS
 4318 PORTAGE ROAD, UNIT 2, NIAGARA FALLS, ON L2E 6A4
 T: (905) 358-3693 F: (905) 358-6224 www.jdbarnes.com

DRAWN BY: CN	CHECKED BY: AH	REFERENCE NO.: 16-16-848-03
PLOTTED: 3/13/2023		DATED: 01/12/23