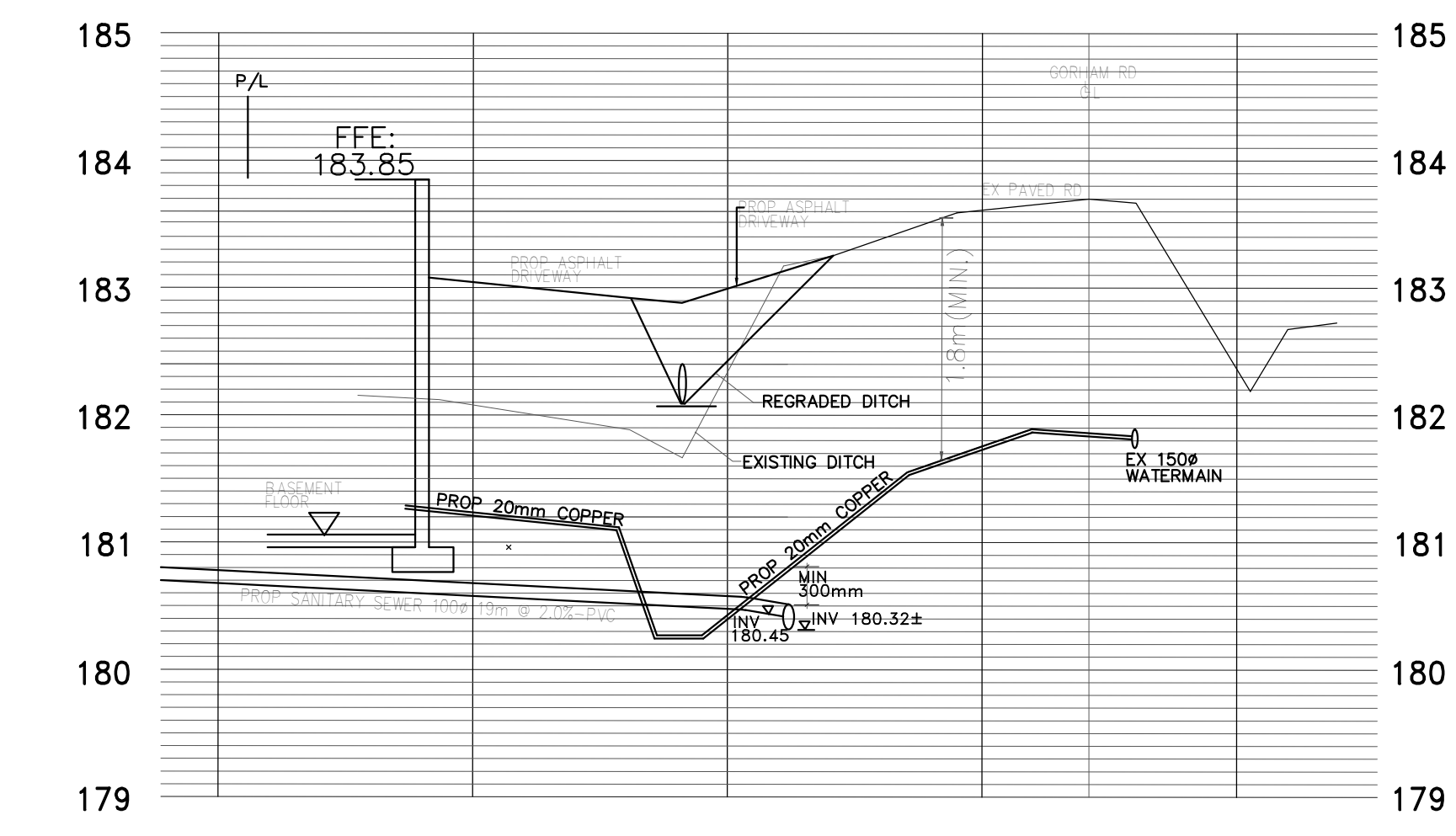


STATION	0+000	0+050	0+100	0+150	0+200	0+210
C/L ROAD ELEV.	184.23	184.16	184.09	184.00	183.88	183.77
EX EAST DITCH ELEVATION	183.34	183.07	182.93	182.84	182.77	182.68
PROPOSED SANITARY SEWER LENGTH	PROP SAN 200mm Ø 66m @ 0.60%-PVC			PROP SAN 200mm Ø 54m @ 0.60%-PVC		

REGIONAL ROAD No. 116 – GORHAM ROAD

GORHAM ROAD PROFILE FOR SANITARY SEWER EXTENSION PROFILE
 HOR: 1:250
 VER: 1:50

REGIONAL ROAD No. 116 – GORHAM ROAD



SECTION A-A
 GORHAM ROAD CROSS SECTION SHOWING SANITARY SEWER AND WATER
 HOR: 1:250 V: 1:50

CONSTRUCTION NOTES:

ALL WORK IS TO BE CARRIED OUT IN ACCORDANCE WITH O.P.S.S. AND O.P.S.D. REQUIREMENTS AND TO THE REQUIREMENTS OF THE LOCAL AND REGIONAL MUNICIPALITY.

BEDDING TO SEWERS AND LATERALS SHALL BE CLASS 'B' GRANULAR 'A' BEDDING AND COVER MATERIAL COMPACTED TO 100% STANDARD PROCTOR DENSITY IN ACCORDANCE WITH THE O.P.S.D. 802.04, 1005.02 AND 1102.02.

BACKFILL TO SEWERS, WATERMAIN & LATERALS SHALL BE NATIVE MATERIAL COMPACTED TO 95% STANDARD PROCTOR DENSITY, EXCEPT UNDER EXISTING PAVEMENT, 2/4" & 3/4" WHERE BACKFILL SHALL BE GRANULAR 'A' COMPACTED TO 100% STANDARD PROCTOR DENSITY.

ALL SANITARY SEWERS LEADS SHALL BE PVC DR35 PIPE AND ALL LATERALS (300mm Ø) SHALL BE PVC DR28 PIPE UNLESS NOTED.

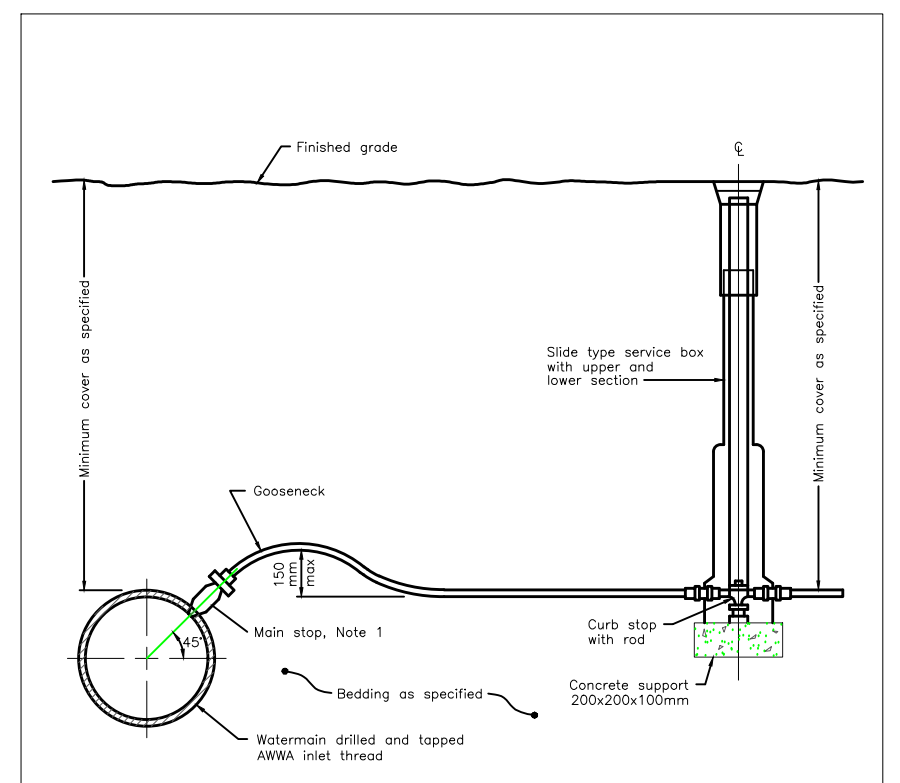
ALL LATERALS TO BE CONNECTED TO THE NEW PIPE USING MANUFACTURED TEE AND SEWER TO THE EXISTING PIPE USING PRE-MANUFACTURED SADDLE AND STAINLESS STEEL STRAP.

THE RESTORATION OF EXISTING ROADS, BOULEVARD AND SIDEWALKS SHALL BE IN ACCORDANCE WITH THE REQUIREMENTS OF THE MUNICIPALITY.

NO DETAILED SDIL INVESTIGATION HAS BEEN CARRIED OUT. THE DESIGN OF THIS DEVELOPMENT ASSUMES THAT NO ADVERSE CONDITIONS WILL BE ENCOUNTERED. CONTRACTORS SHOULD CHECK EXISTING SITE CONDITIONS AND INCLUDE NECESSARY COMPENSATION.

THE POSITION OF POLE LINES, CONDUITS WATERMANS, SEWERS AND OTHER UNDERGROUND AND OVERGROUND UTILITIES AND STRUCTURES IS NOT NECESSARILY ON CONSTRUCTION DRAWINGS AND WHERE SHOWN, THE ACCURACY OF THE POSITION OF SUCH UTILITIES AND STRUCTURES IS NOT GUARANTEED.

ALL GRANULAR MATERIALS IN DRIVEWAY, PARKING AREA ETC. SHALL BE COMPACTED TO 100% STANDARD PROCTOR DENSITY.



CONSTRUCTION SPECIFICATIONS:

ALL WORK IS TO BE CARRIED OUT IN ACCORDANCE WITH O.P.S.S. AND O.P.S.D. REQUIREMENTS AND TO THE REQUIREMENTS OF THE LOCAL AND REGIONAL MUNICIPALITY.

DPS SPECIFICATIONS:
 201, 206, 212, 310, 313, 314, 351, 353, 405, 407, 410, 501, 504, 506, 507, 514, 515, 516, 517, 538, 570, 571, 701, 904, 905, 1002, 1010, 1351

DPS DRAWINGS:
 BACKFILL FOR SEWERS DPSD 803.04
 SEWER SERVICE CONNECTION DPSD 1006.02
 WATER SERVICES DPSD 1104.01
 PRECAST MH DPSD 701.01

ONTARIO PROVINCIAL STANDARD DRAWING	Nov 2006	Rev 2	
WATER SERVICE CONNECTION			
19 and 25mm DIAMETER SIZES	OPSD 1104.010		

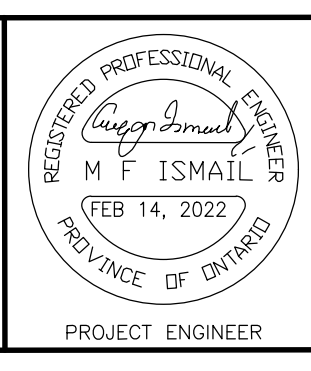
IMPORTANT NOTE
 THE ADJOINING LANDS MATCH EXISTING GRADES ALONG THE PROPERTY LINE. FINISHED LOT DRAINAGE NOT TO ADVERSLY EFFECT DRAINAGE OF DOWNSPOUT TO SPLASH ON GROUND ON CONCRETE SPLASH PAD AND FLOW TO CB WHERE POSSIBLE.
 ALL CURB AND S/W RECONSTRUCTION TO BE CO-ORDINATED WITH THE CITY'S SUPERVISOR OF CONSTRUCTION.

LEGEND

○ L	○ L	— H	— H
○ S	○ S	— W	— W
○ B	○ B	— G	— G
○ H	○ H	— S	— S
○ M	○ M	— ST	— ST
○ C	○ C	— CB	— CB
○ D	○ D	— CS	— CS
○ E	○ E	— C	— C
○ F	○ F	— S	— S
○ G	○ G	— C	— C
○ I	○ I	— S	— S
○ J	○ J	— C	— C
○ K	○ K	— S	— S
○ L	○ L	— C	— C
○ M	○ M	— S	— S
○ N	○ N	— C	— C
○ O	○ O	— S	— S
○ P	○ P	— C	— C
○ Q	○ Q	— S	— S
○ R	○ R	— C	— C
○ S	○ S	— S	— S
○ T	○ T	— C	— C
○ U	○ U	— S	— S
○ V	○ V	— C	— C
○ W	○ W	— S	— S
○ X	○ X	— C	— C
○ Y	○ Y	— S	— S
○ Z	○ Z	— C	— C

DRAFTING

MI	DESIGN
MI	CHECKED BY
MI	PROJ. SUPVR.



RIDGWAY COMMUNITY CITY OF FORT ERIE
PREMIER ENGINEERING SOLUTIONS CIVIL ENGINEERS
 3294 ALPACA AVENUE
 MISSISSAUGA, ONTARIO L5M 7V3
 PHONE (905) 817-1294 EMAIL: mf@p-engineeringsolutions.com

BENCH MARK DATUM

SINGLE FAMILY RESIDENCES
726 GORHAM ROAD, RIDGWAY, ONTARIO
SANITARY SEWER EXTENSION
PLAN AND PROFILE

DATE	OCT 30, 2021
SCALE	1:250
DWG No.	GORHAM-PP1
MUN. REF. No.	REV. 0

0 ISSUED FOR REVIEW AND APPROVAL
 FEB 14, 2022 MF