

PROJECT: GORHAM ROAD RESIDENCES

RIDGEWAY, ON
 DATE: 2021-07-06
 PROJECT NO: 1903
 REVISION: DATE

NOTES:

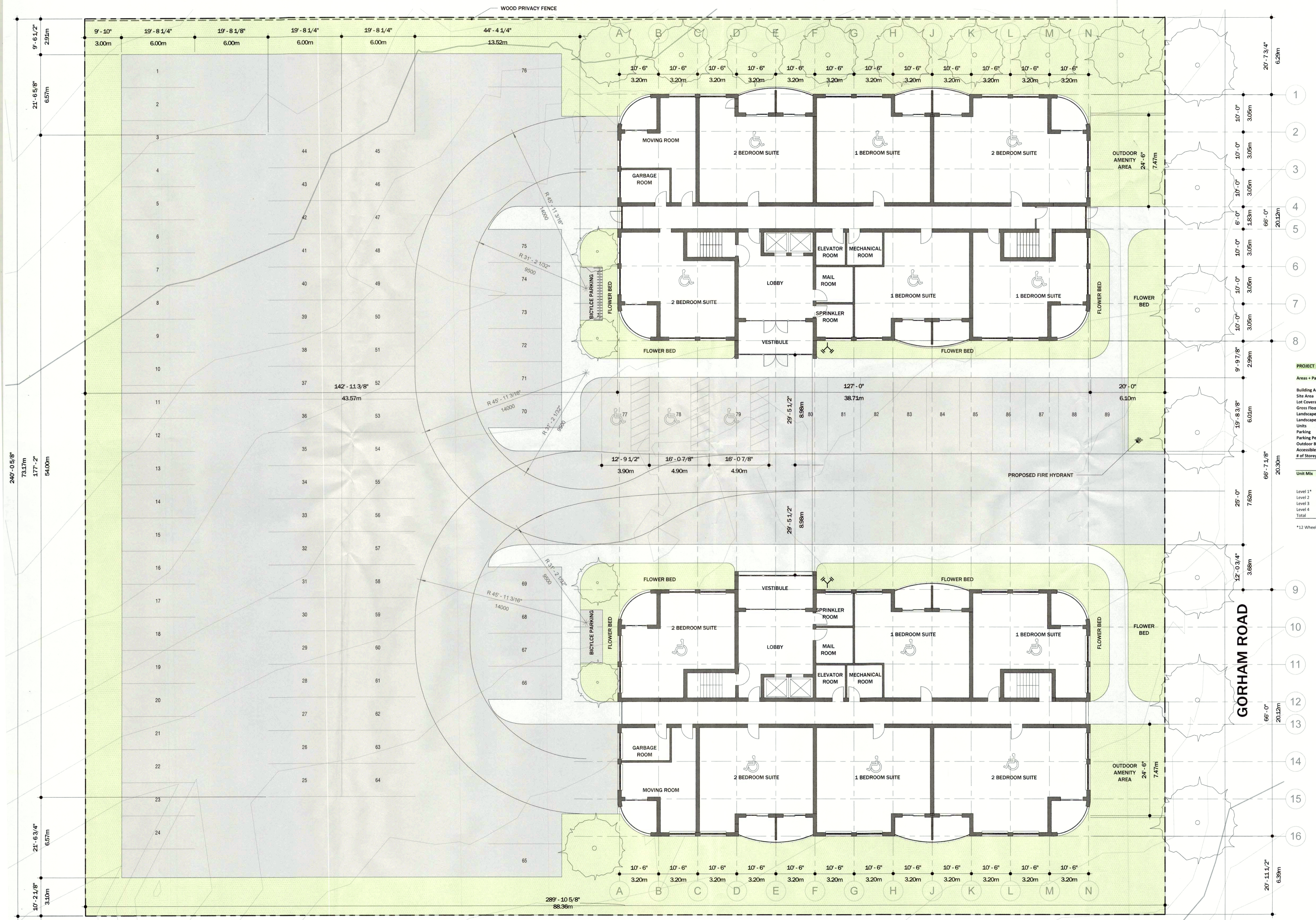
PROJECT STATISTICS

Areas + Parking		sf	sm
Building Area		16,754	1,556
Site Area		69,626	6,468
Lot Coverage		24%	
Gross Floor Area		60,606	5,630
Landscaped Area		19,675	1,828
Landscaped Coverage		28%	
Units		72	
Parking		89	
Parking Per Unit		1.24	
Outdoor Bicycle Parking		36	
Accessible Spaces		3	
# of Storeys		4	

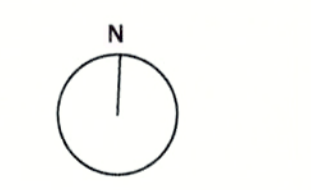
Unit Mix

	1 Bed	2 Bed	Total
Level 1*	6	6	12
Level 2	16	4	20
Level 3	16	4	20
Level 4	16	4	20
Total	54	18	72

*12 Wheel chair accessible units at Level 1



SITE PLAN



SCALE: 3/32" = 1'-0"

A001

DRAWN BY: Author