

NOT FOR CONSTRUCTION
ISSUED FOR REVIEW & COMMENTS ONLY

REVISIONS/ SUBMISSIONS

#	DATE	DESCRIPTION
1	2022-10-21	Issued for review
2	2022-11-11	Issued for review

STAMP

CLIENT
Culture Developments

MUNICIPALITY
Town of Fort Erie

PROJECT
The Canadian Block
Townhomes Development
272 Ridge Road Towns

MUNICIPAL FILE NUMBER

SHEET
Landscape Plan

L-1

adesso design inc.
landscape architecture

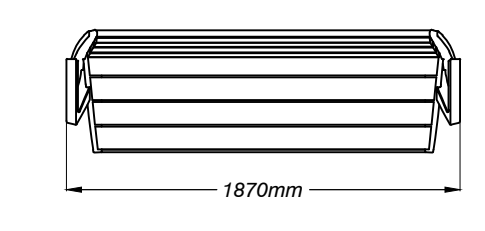
218 Locke Street South, 2nd Floor
Hamilton, ON L8P 4B4
t. 905.526.8876
www.adessodesigninc.ca

- LANDSCAPE NOTES:
- All work to be carried out in accordance with by-laws and codes having jurisdiction over site location.
 - Complete all work to the satisfaction of the Landscape Architect.
 - Report any changes, discrepancies or substitutions to the Landscape Architect for review. Obtain approval from the Landscape Architect before proceeding.
 - It is the contractor's responsibility to determine existing service locations.
 - Exact locations of plant material will be determined by placement of site services such as hydro vaults, meters, utilities roof rain water leaders, driveways, light standards, etc.
 - All plant material locations to be staked or marked out and approved by Landscape Architect prior to installation.
 - Supply all plant material in accordance with the Canadian Standards for Nursery Stock (8th ed.).
 - Install plant material according to details shown.
 - Supply and place mulch in accordance with Canadian Landscape Standard (Section 10, Mulching). Disturbed soil areas around trees and shrubs are to be covered with shredded conifer bark mulch such as Cedar Bark Mulch by All Treat Farms or Classic Cedar Mulch by Gro-Bark, or approved equivalent. Alternative mulches must be approved by the Landscape Architect.
 - Contractor to utilize layout dimensions where provided.
 - Provide planting bed area as noted on the drawing or to accommodate mature size of plant material.
 - All support systems must be removed by the contractor at time of final acceptance. No extras will be paid to complete this work.
 - Supply and place topsoil in accordance with Canadian Landscape Standard (Section 4, Grading & Drainage and Section 6, Growing Medium) to a minimum depth of 150mm unless otherwise specified.
 - Supply and place sod in accordance with Canadian Landscape Standard (Section 7, Lawns & Grass and Section 8, Turfgrass Sod) unless otherwise specified.
 - Supply and place seed in accordance with Canadian Landscape Standard (Section 4, Grading & Drainage and Section 6, Growing Medium) unless otherwise specified. All 5:1 or greater slopes to be seeded with facier. Contractor to provide necessary erosion control protection as required to ensure soil stabilization and proper seed germination.
 - All dimensions in meters unless otherwise noted.
 - If discrepancies arise between plant material count shown on drawing and plant list, the drawing shall be considered correct. Contractor to provide minimum one (1) year warranty (including trees on municipal property) from date accepted on all work unless otherwise specified.
 - Any site plan or grading and servicing shown is for information only. Refer to approved drawings.
 - Not for construction unless stamped, signed and dated by Landscape Architect.
 - Drawings not to be reproduced without written consent from Landscape Architect.
 - Approval of landscape plan to be obtained from municipality.
 - All plant material to be planted a minimum of 1.0m from any swales or ditches.
 - For grading and servicing information refer to the consulting Engineer's drawings.
 - For lighting information and power distribution refer to the electrical consultant's drawings.

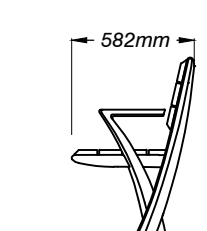
PLANT SCHEDULE - LANDSCAPE PLAN

TREES	BOTANICAL NAME	COMMON NAME	SIZE	COND.	MATURE HT. (M)	MATURE SPR. (M)	O.C. (M)	REMARKS
3	Acer rubrum	Red Maple	50mm Cal.	W.B.	15.0	12.0	As Shown	Native to Ontario
5	Amelanchier canadensis	Canadian Serviceberry	50mm Cal.	W.B.	6.0	4.0	As Shown	Native to Ontario
2	Cercis canadensis	Eastern Redbud	50mm Cal.	W.B.	9.0	7.0	As Shown	Native to Ontario
4	Cornus florida	White Flowering Dogwood	250cm Ht.	W.B.	7.0	8.0	As Shown	Multi-stem form
3	Liriodendron tulipifera	Little Volunteer Tulip Poplar	50mm Cal.	W.B.	7.0	4.0	As Shown	
4	Ostrya virginiana	Ironwood	50mm Cal.	W.B.	10.0	7.0	As Shown	Native to Ontario
4	Prunus virginiana	Common Chokecherry	50mm Cal.	W.B.	6.0	5.0	As Shown	Native to Ontario
4	Pyrus calleryana	Chanticleer Ornamental Pear	50mm Cal.	W.B.	11.0	4.0	As Shown	
21	Thuja occidentalis 'Nigra'	Black Cedar	180cm Ht.	W.B.	8.0	2.0	As Shown	
7	Tilia cordata 'Coralbloss'	Coralbloss Littleleaf Linden	50mm Cal.	W.B.	13.0	4.0	As Shown	
SHRUBS	BOTANICAL NAME	COMMON NAME	SIZE	COND.	MATURE HT. (M)	MATURE SPR. (M)	O.C. (M)	REMARKS
10	Cornus sericea 'Arctic Fire'	Arctic Fire Dogwood	60cm	#3 cont.	1.0	1.0	0.80	
50	Hydrangea arborescens 'Annabelle'	Annabelle Hydrangea	60cm	#3 cont.	1.1	1.0	0.90	
30	Juniperus sabinia	Savin Juniper	40cm	#3 cont.	1.0	1.25	1.0	
7	Taxus x media 'Fairview'	Fairview Yew	40cm	#3 cont.	1.75	1.5	1.25	
GRASSES	BOTANICAL NAME	COMMON NAME	SIZE	COND.	MATURE HT. (M)	MATURE SPR. (M)	O.C. (M)	REMARKS
79	Calamagrostis x acutiflora 'Karl Foerster'	Karl Foerster Feather Reed Grass	#1 cont.		1.25	0.60	0.50	
21	Deschampsia cespitosa	Tufted Hair Grass	#1 cont.		0.70	0.70	0.60	Native to Ontario
PERENNIALS	BOTANICAL NAME	COMMON NAME	SIZE	COND.	MATURE HT. (M)	MATURE SPR. (M)	O.C. (M)	REMARKS
22	Rudbeckia hirta	Black-Eyed Susan	#1 cont.		0.60	0.50	0.40	Native to Ontario

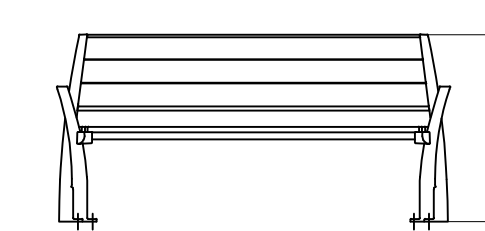
PLAN



SECTION



ELEVATION



EQUIPARC BENCH - EP 1630-IFE-A

MODEL: EP 1630-IFE-A - With Backrest and Arms - Collection: Tango

BACK&ARMS: IFE with standard quality clear dye.

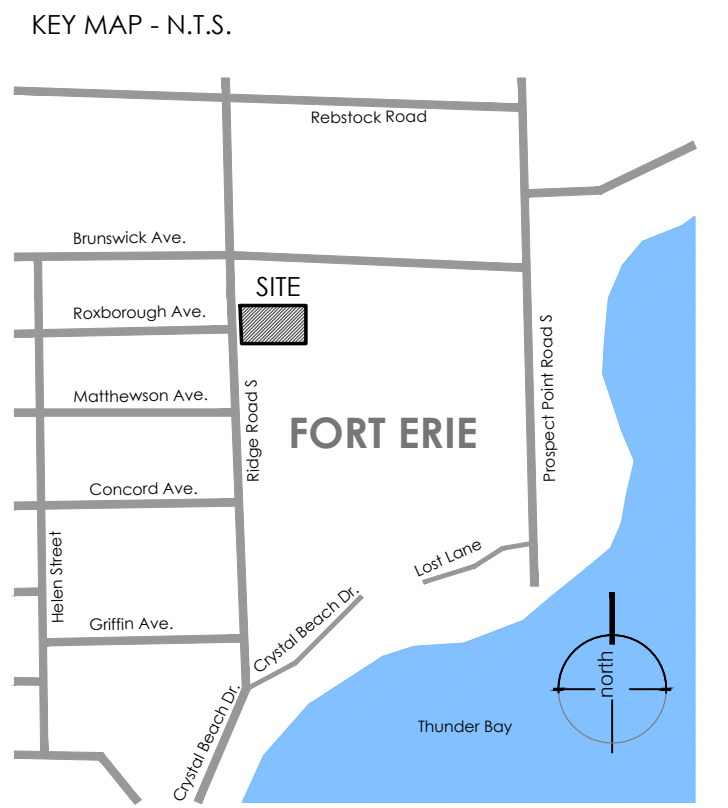
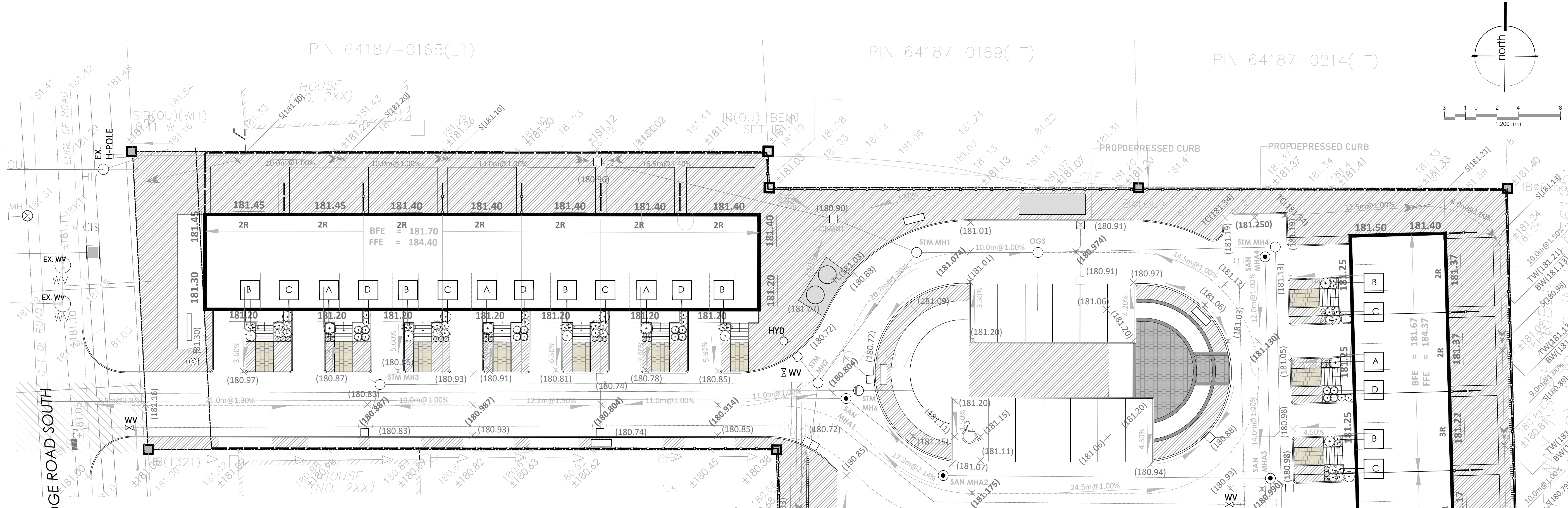
LEGS: Hot dipped galvanized steel, specify color: Black or approved eq.

UNITS: 2-see landscape plan for layout.

NOTES: Handle with care, bench's finish can be scuffed by contact with tools, concrete, or other abrasive surfaces. Contractor to protect the finish from damage during installation. To be installed as per manufacturer's specifications

SUPPLIED BY: Equiparc, - or approved equal
1001 James-Brodie
St-Jean-sur-Richelieu, QC, J2X 0C1
T: 450-346-1882
F: 866-346-2538
www.equiparc.com

Backed Bench by Equiparc (or approved equal)



- LEGEND**
- property line
 - A unit planting identification key
 - proposed shrub
 - ⊕ proposed perennial
 - existing elevation
 - (180.97) proposed elevation
 - ▨ min. 150mm topsoil, fine grade & sod

NOT FOR CONSTRUCTION
ISSUED FOR REVIEW & COMMENTS ONLY

REVISIONS/ SUBMISSIONS

#	DATE	DESCRIPTION
1	2022-10-21	Issued for review
2	2022-11-11	Issued for review

STAMP

CLIENT
Culture Developments
MUNICIPALITY
Town of Fort Erie

PROJECT
The Canadian Block
Townhomes Development
272 Ridge Road Towns

MUNICIPAL FILE NUMBER

SHEET
Unit Planting

L-2

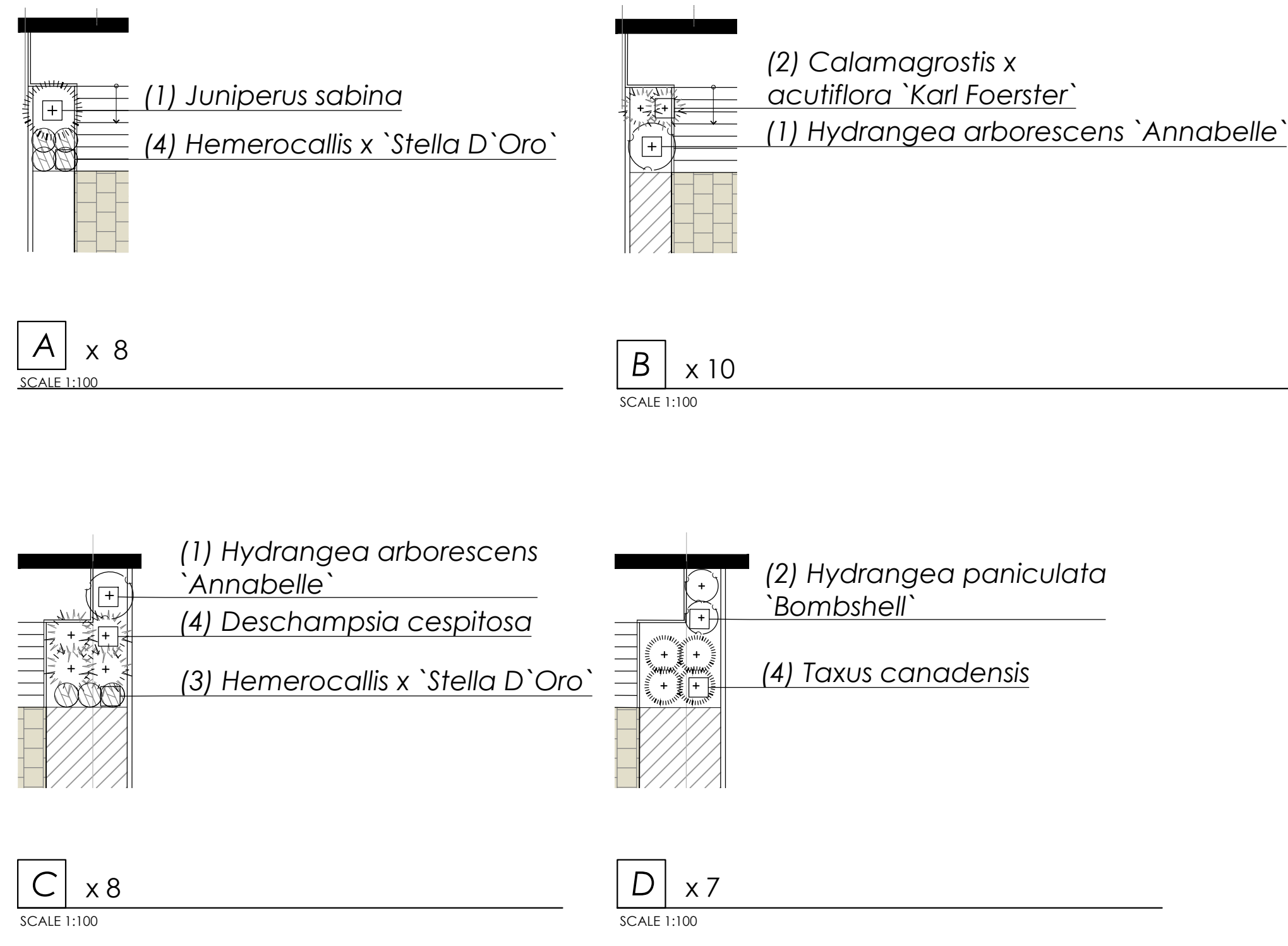
adesso design inc.
landscape architecture

218 Locke Street South, 2nd Floor
Hamilton, ON L8P 4B4
t. 905.526.8876
www.adessodesigninc.ca

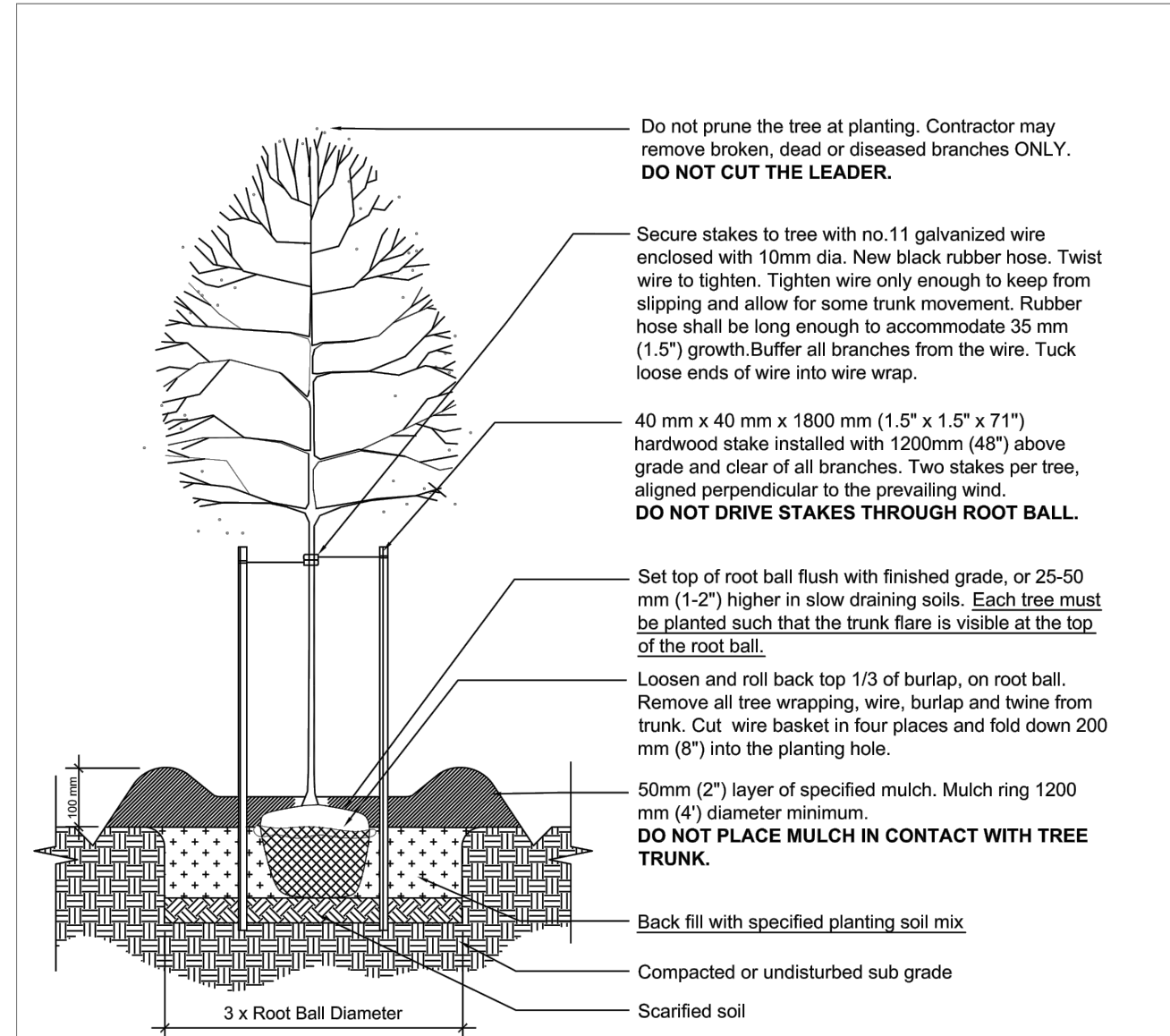
PLANT SCHEDULE - UNIT PLANTING

SHRUBS	BOTANICAL NAME	COMMON NAME	SIZE	COND.	MATURE HT. (M)	MATURE SPR. (M)	O.C. (M)	REMARKS
16	Hydrangea arborescens 'Annabelle'	Annabelle Hydrangea	60cm	#3 cont.	1.1	1.0	0.90	
14	Hydrangea paniculata 'Bombshell'	Bombshell Hydrangea	60cm	#3 cont.	0.70	0.70	0.60	
8	Juniperus sabina	Savin Juniper	40cm	#3 cont.	1.0	1.25	1.0	
28	Taxus canadensis	Canadian Yew	40cm	#3 cont.	0.50	0.80	0.70	Native to Ontario
GRASSES	BOTANICAL NAME	COMMON NAME	SIZE	COND.	MATURE HT. (M)	MATURE SPR. (M)	O.C. (M)	REMARKS
20	Calamagrostis x acutiflora 'Karl Foerster'	Karl Foerster Feather Reed Grass	#1 cont.	1.25	0.60	0.50		
32	Deschampsia cespitosa	Tufted Hair Grass	#1 cont.	0.70	0.70	0.60		Native to Ontario
PERENNIALS	BOTANICAL NAME	COMMON NAME	SIZE	COND.	MATURE HT. (M)	MATURE SPR. (M)	O.C. (M)	REMARKS
56	Hemerocallis x 'Stella D'Oro'	Stella D'Oro Daylily	#1 cont.	0.30	0.50	0.40		

UNIT PLANTING ENLARGEMENTS



1/21/2023 10:58 AM: 20221021_229 - 272 Ridge Road Townhomes Development - Unit Planting
 LAST MODIFIED BY: [Redacted] PROJECT: 20221021_229 - 272 Ridge Road Townhomes Development - Unit Planting
 PLOTTED BY: [Redacted] DATE: 2022-11-11 10:58 AM



- NOTES**
1. Ensure that plant material does not dry out prior to installation.
 2. Do not allow air pockets when backfilling.
 3. Water and mulch plant immediately following planting.
 4. Contractor shall remove tree stakes and ties prior to expiration of warranty period, or as directed by Contract Administrator.
 5. Trees showing signs of girdling may be required to be replaced.
 6. No tree pits shall be left open overnight.
 7. Mark north side of tree in the nursery and rotate tree to face north at the site, wherever possible.

DECIDUOUS TREE PLANTING DETAIL

Town of Fort Erie
2014
Not To Scale

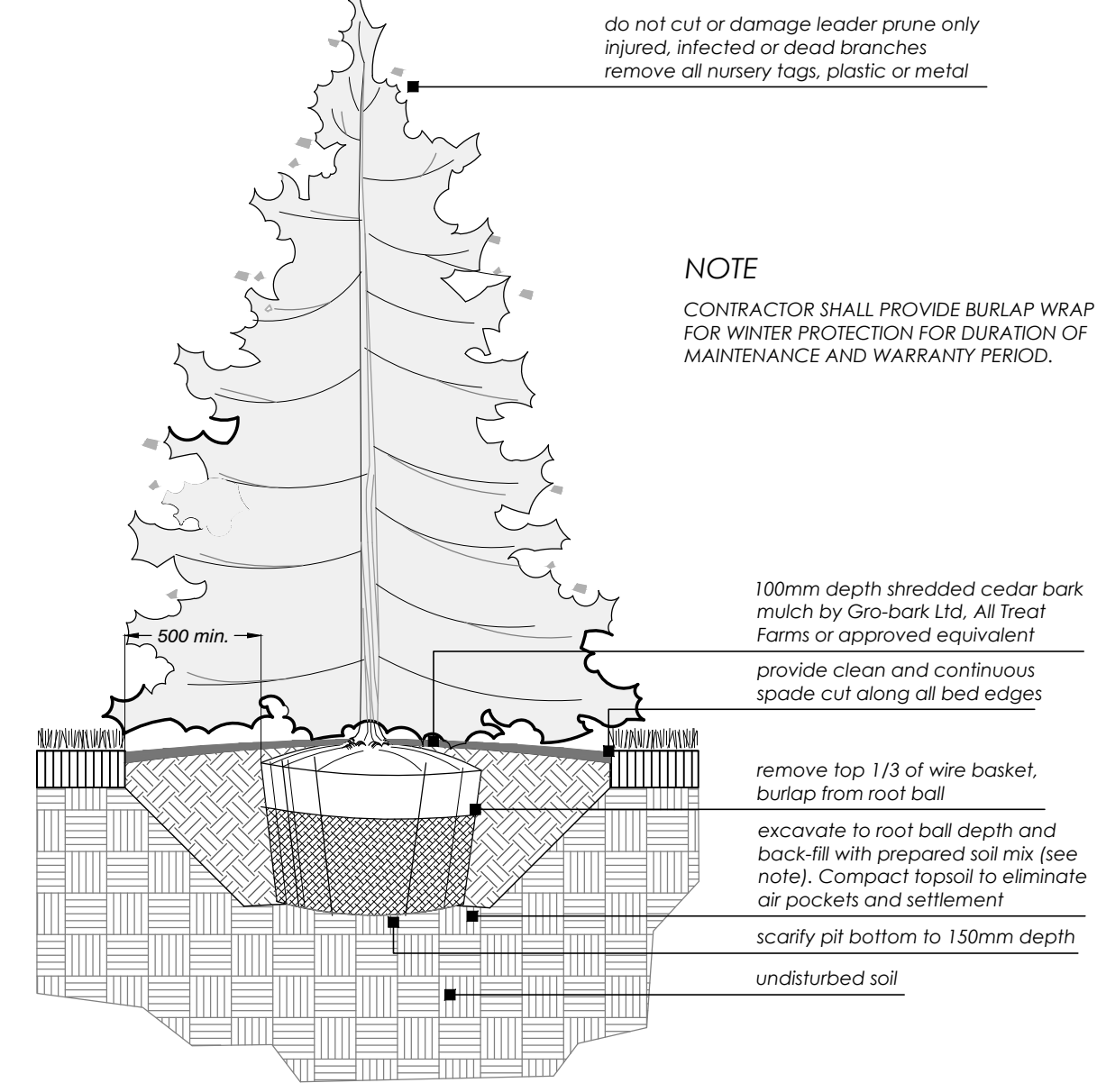


Deciduous Tree Planting Detail - Town of Fort Erie

1
L-3

Balled & Burlapped/ Wire Basket Coniferous Tree

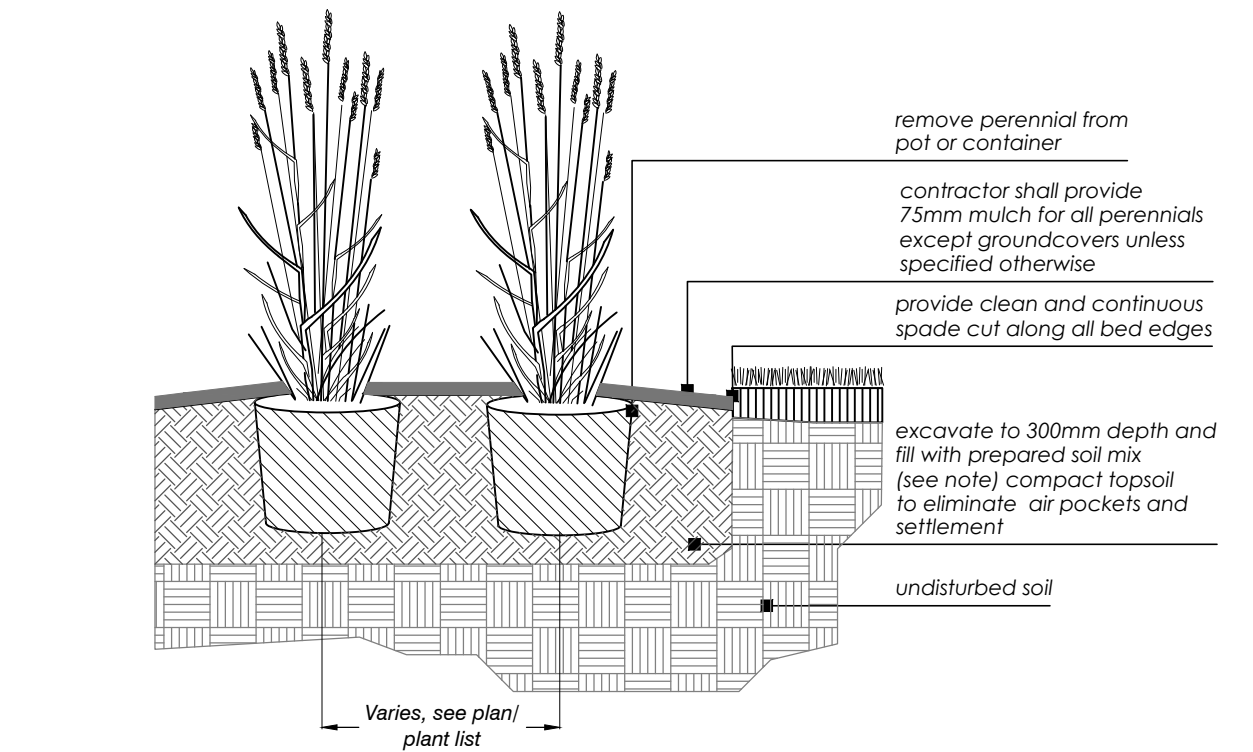
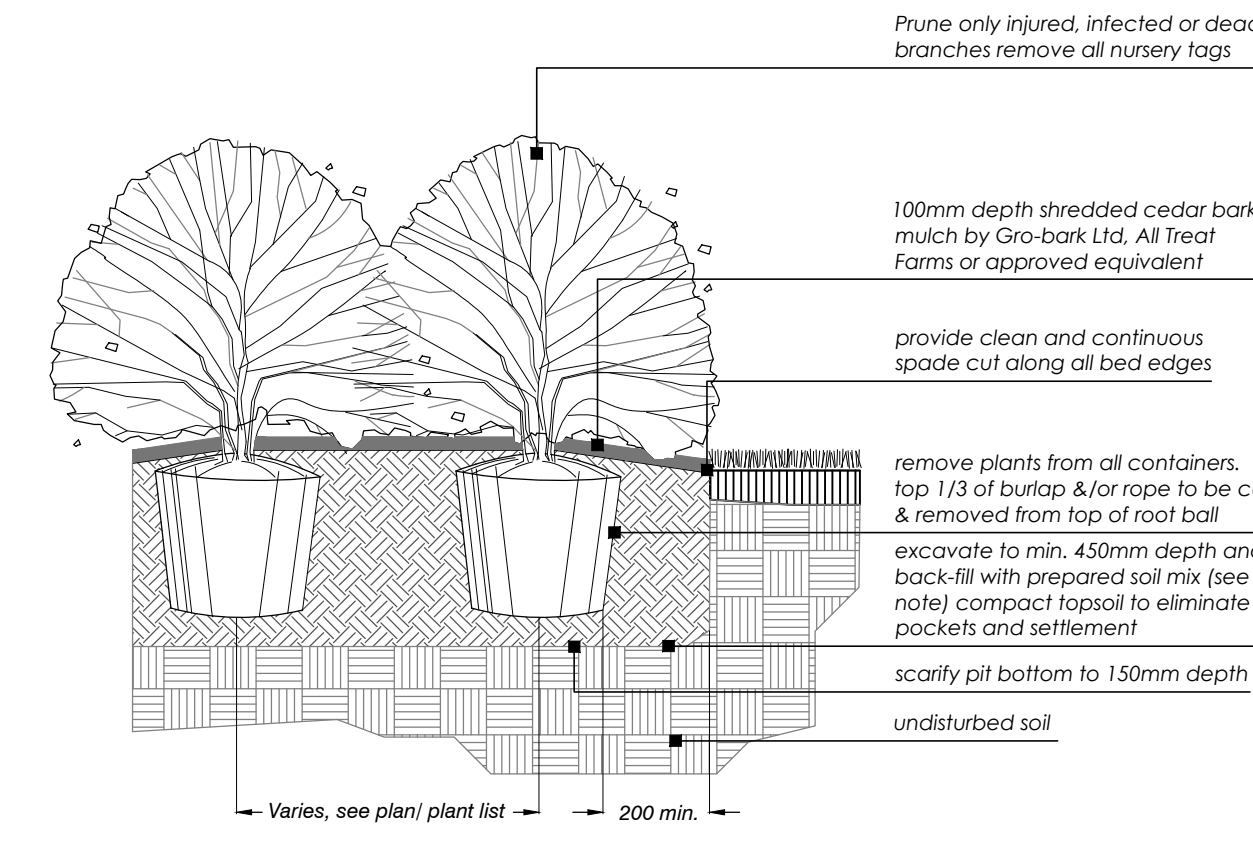
2
L-3



Container Grown Shrub

SCALE: NTS

3
L-3

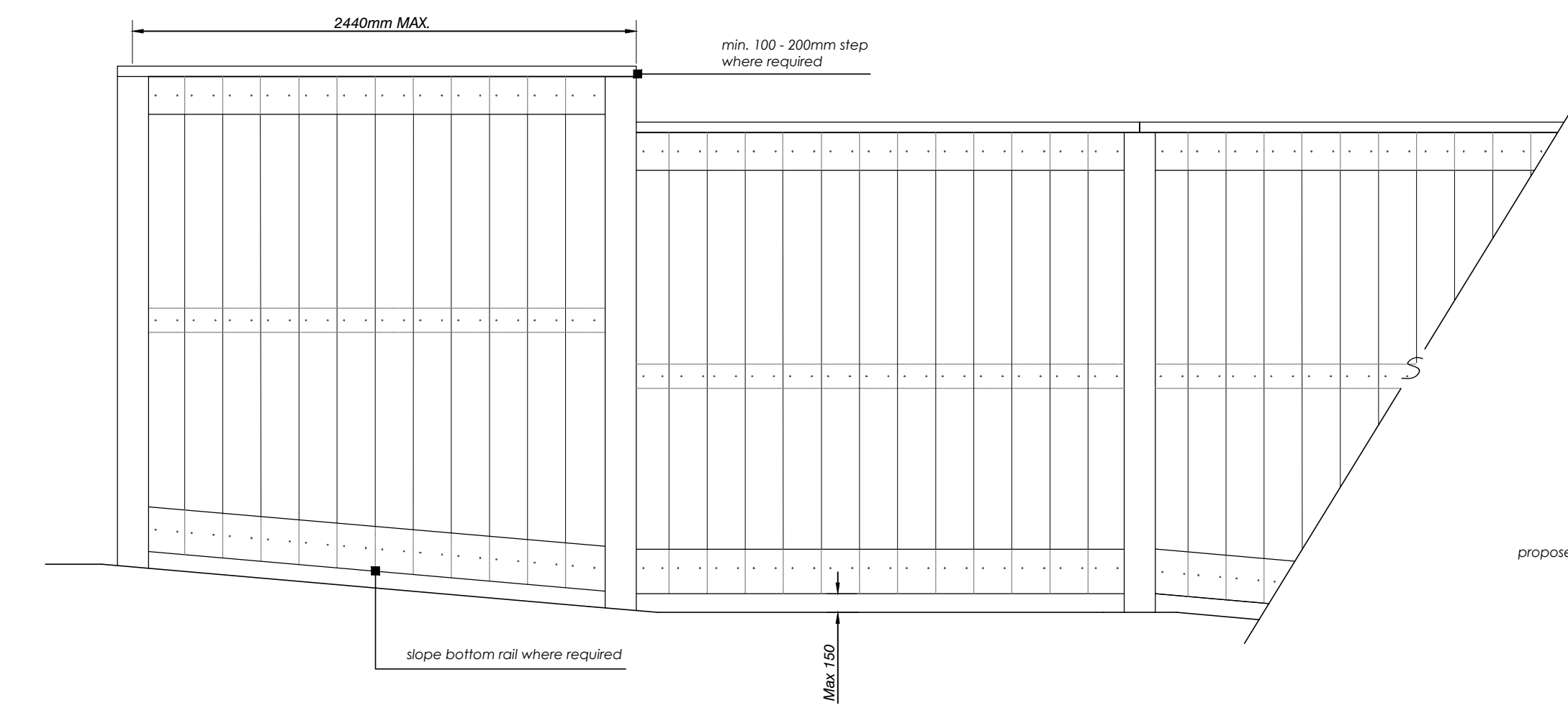


Container Grown Perennial

SCALE: NTS

4
L-3

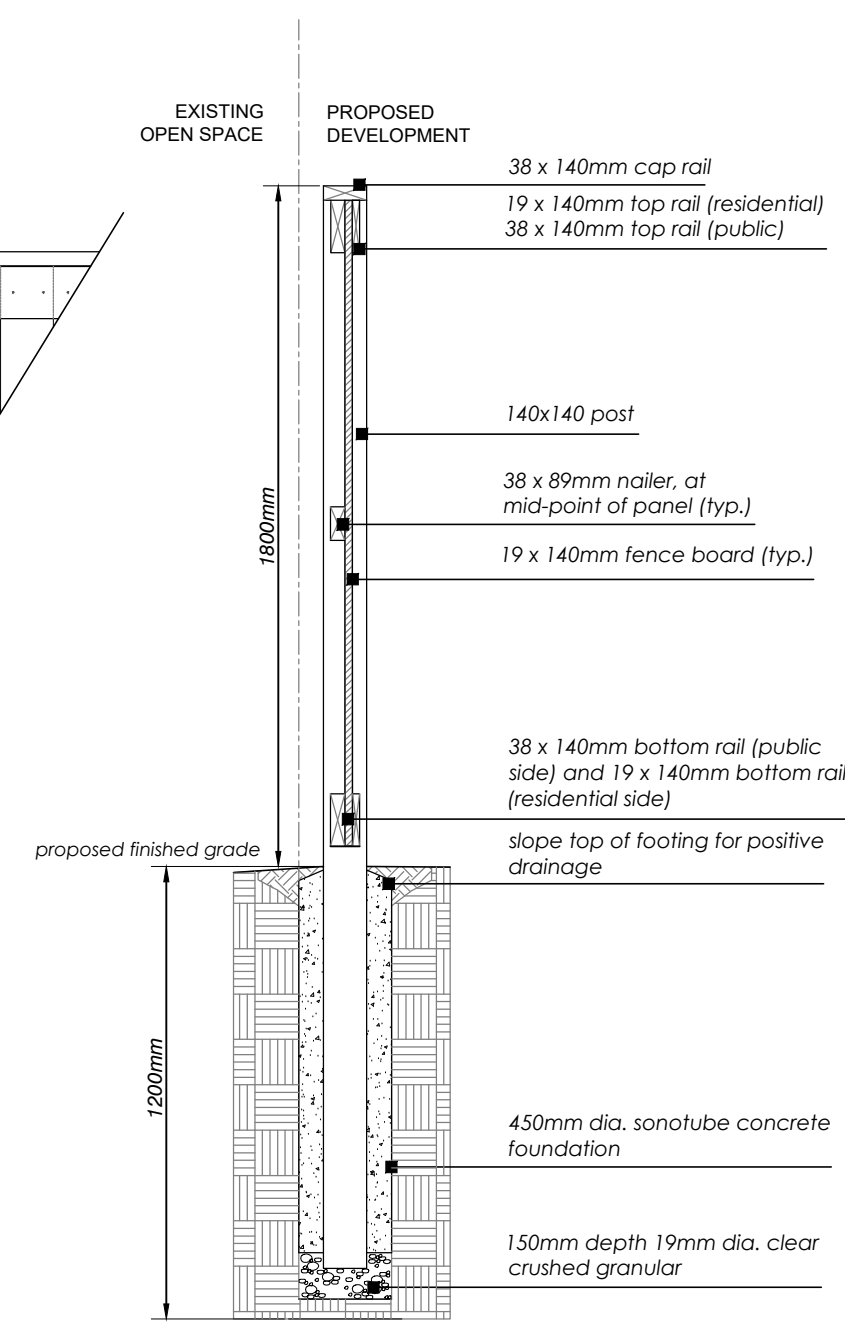
ELEVATION



NOTES:

1. All materials, components and workmanship to conform to building and local by-laws.
2. All wood to be Pressure Treated (Spruce, Pine Fir) selected mainly for good appearance all members shall be free of knots and bark pockets. All torn grain shall be eliminated by sanding and planing. Members exhibiting moderate to heavy knots shall be well distributed throughout the site.
3. All cuts and holes that expose untreated wood should be liberally brush-coated with two applications of an end-cut preservative (copper naphthenate in ground contact or zinc naphthenate above ground) before the wood is installed. Follow the manufacturer's recommendations re: the application of suitable preservatives.
4. All wood to bear lumber grading stamp.
5. All fasteners shall have exterior grade finishes suitable for use with Pressure Treated lumber. Stainless steel, galvanized, zinc-dipped or ceramic-coated wood/deck screws are acceptable.
6. All galvanizing to be hot dipped in conformance to CSA standard C164.
7. Drive all fastener heads below surface of wood. Use sufficient size and quantity of fasteners to ensure a stable, secure structure.
8. Step fence panels minimum of 100 - 200mm at posts as required by grade conditions. Sloping of panels may be required for certain grade conditions - Consultant's approval required.
9. Lumber sizes are actual sizes rather than nominal sizes.
10. Concrete to have minimum compressive strength of 25 MPa @ 28 days with 5-7% air entrainment.
11. See landscape plan for fence location.

SECTION



GENERAL LAYOUT NOTES

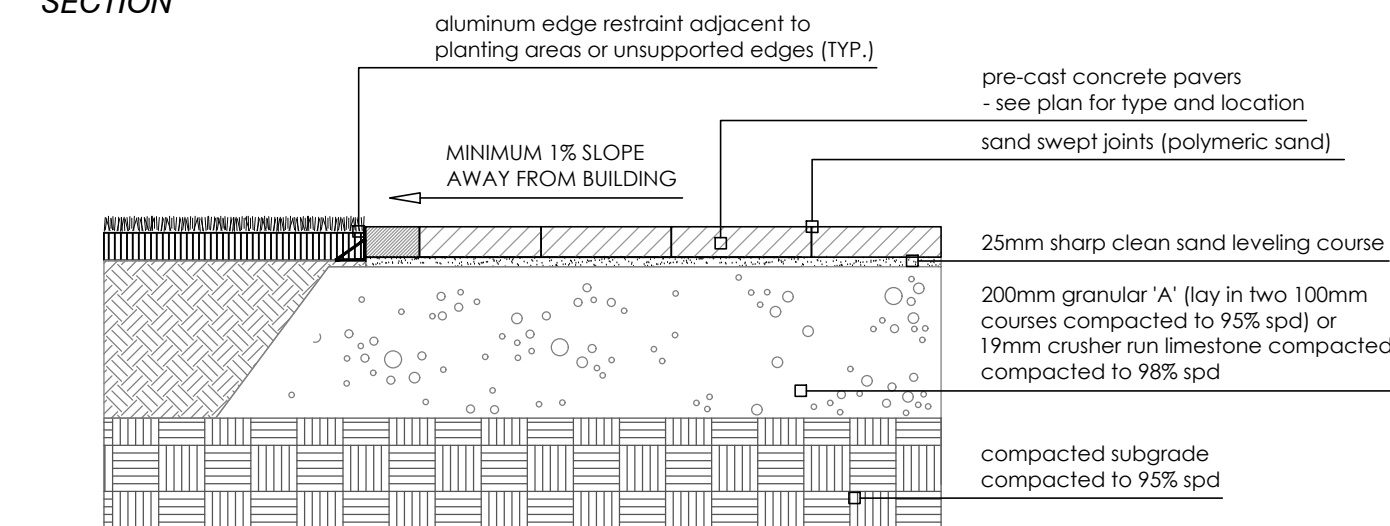
1. All fences adjacent to road allowances and walkways to be erected 0.15m onto private property. Fencing is not to be erected on the lot line or into any road allowance or easement.
2. Footing and excavation to be entirely on proposed development lands.

5
L-3

Wood Privacy Fence (1.8m height - pressure treated)

SCALE: NTS

SECTION



NOTES:

1. Paver types are as follows (or approved equal):

TYPE	DESCRIPTION	PATTERN	SIZE	COLOUR
'A'	Squadra by Techo-bloc	Fish scale	83 x 83 x 60	Onyx Black
'B'	Industria Granitex by Techo-bloc	Linear Pattern 02	300 x 100	Grayed Nickel
'C'	Industria Granitex by Techo-bloc	Linear Pattern 02	300 x 100	Beige Cream

2. Unit pavers are 100mm thick. Contractor to provide samples on site to be approved by Landscape Architect and/or Owner.

Precast Concrete Pavers

SCALE: NTS

6
L-3

PLANTING NOTES:

1. Soil mixture: four (4) parts native soil, one (1) part well rotted compost if existing soil is not suitable provide triple mix topsoil or approved equal.
2. Saucer shall be soaked with water and mulched immediately following planting.
3. Massed shrubs shall be planted in continuous mulched beds unless otherwise noted.
4. Staking schedule:
 - < 30mm caliper size / 2500mm ht. - one stake
 - > 30mm caliper size / 2500mm ht. - two stakes
 - > 70mm caliper - three stakes
5. All support systems must be removed once tree is established.
6. All trees to be straight and planted vertically regardless of slope.
7. Top of root flare shall be positioned 50mm above grade.
8. The following depths of soil are required for planting:
 - 15cm topsoil for sod;
 - 30cm of topsoil for perennials;
 - 45cm of topsoil for shrubs;
 - 90cm of topsoil for trees

NOT FOR CONSTRUCTION
ISSUED FOR REVIEW & COMMENTS ONLY

REVISIONS/ SUBMISSIONS

#	DATE	DESCRIPTION
1	2022-10-21	Issued for review
2	2022-11-11	Issued for review

STAMP

CLIENT
Culture Developments

MUNICIPALITY
Town of Fort Erie

PROJECT
The Canadian Block
Townhomes Development
272 Ridge Road Towns

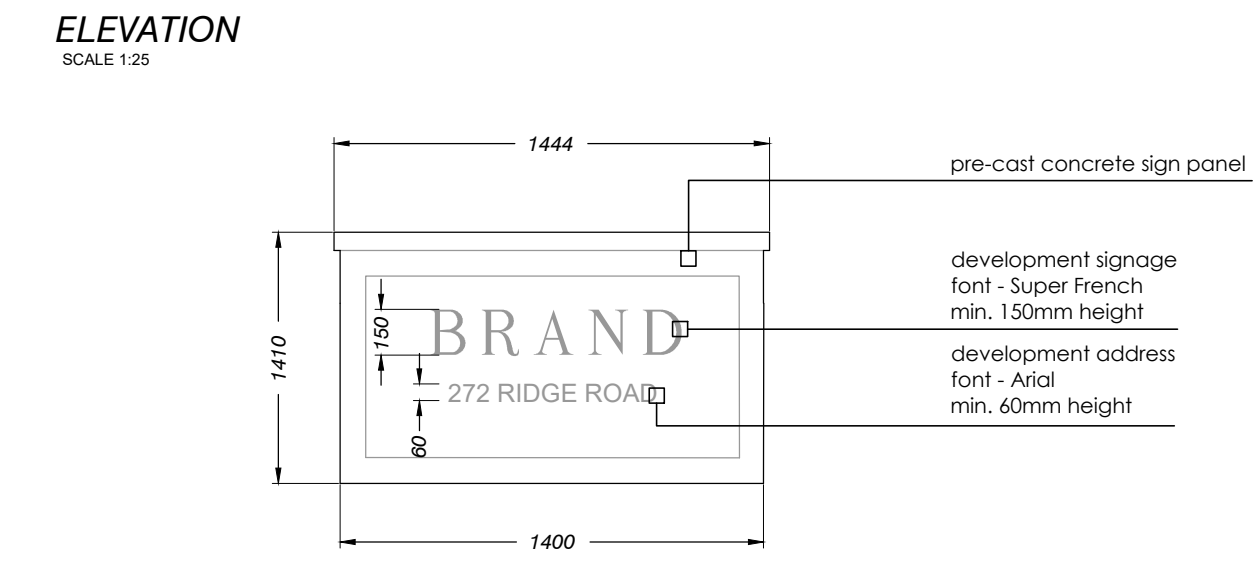
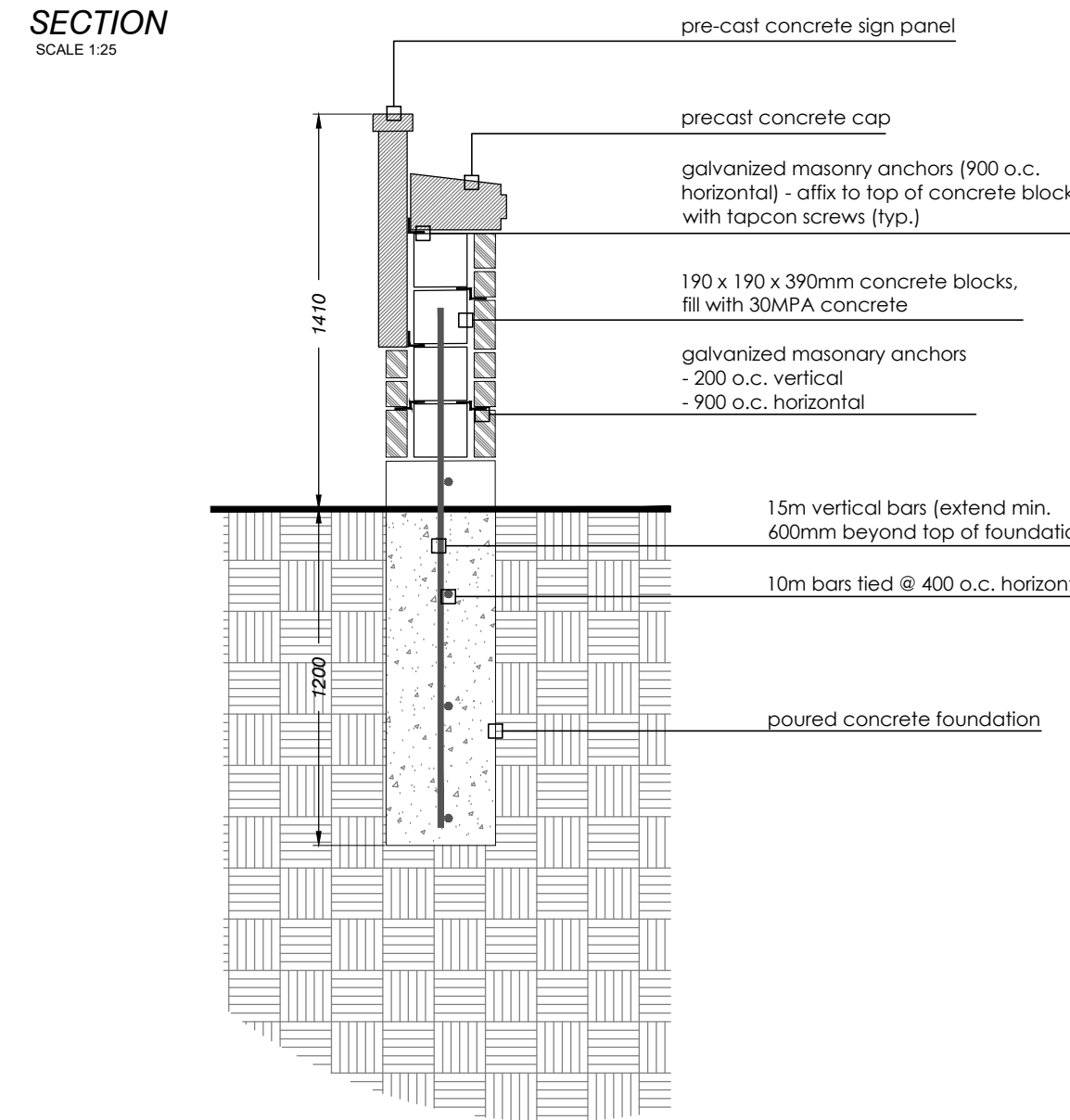
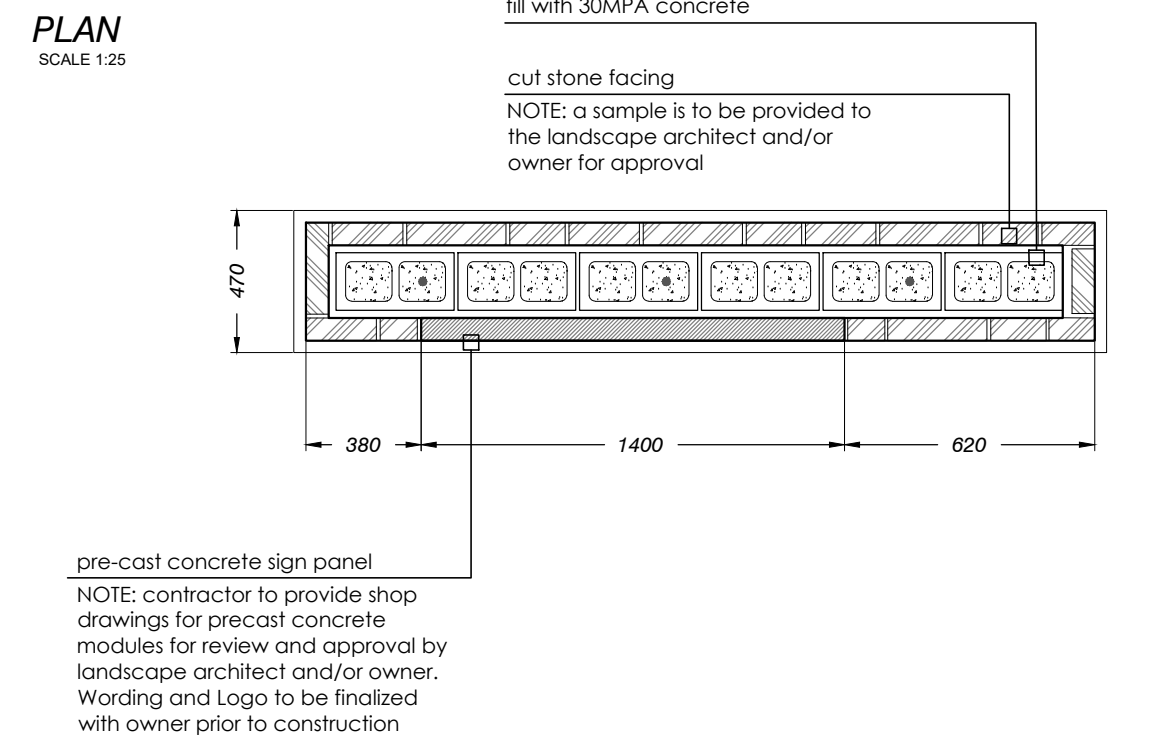
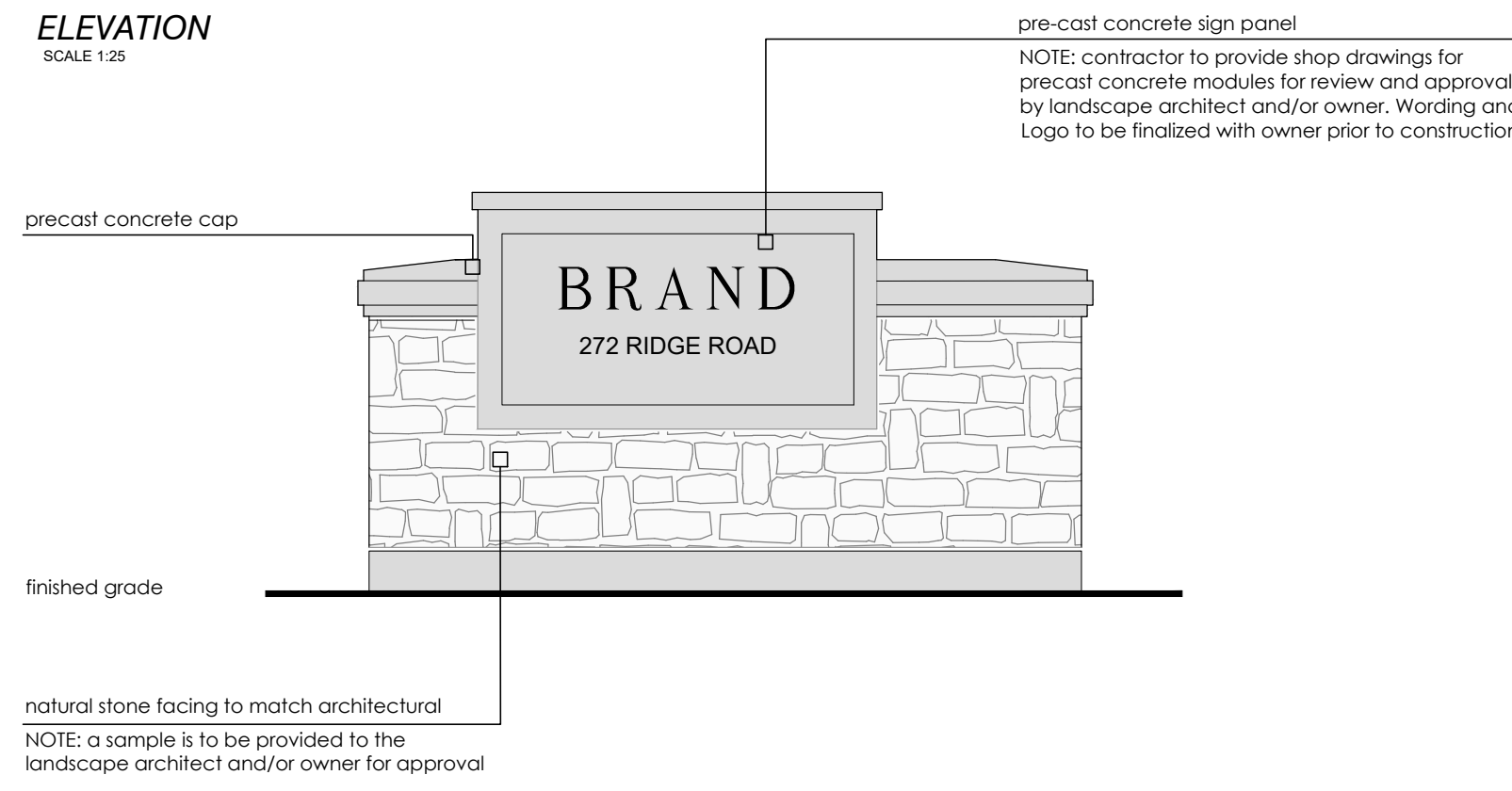
MUNICIPAL FILE NUMBER

SHEET
Details

L-3

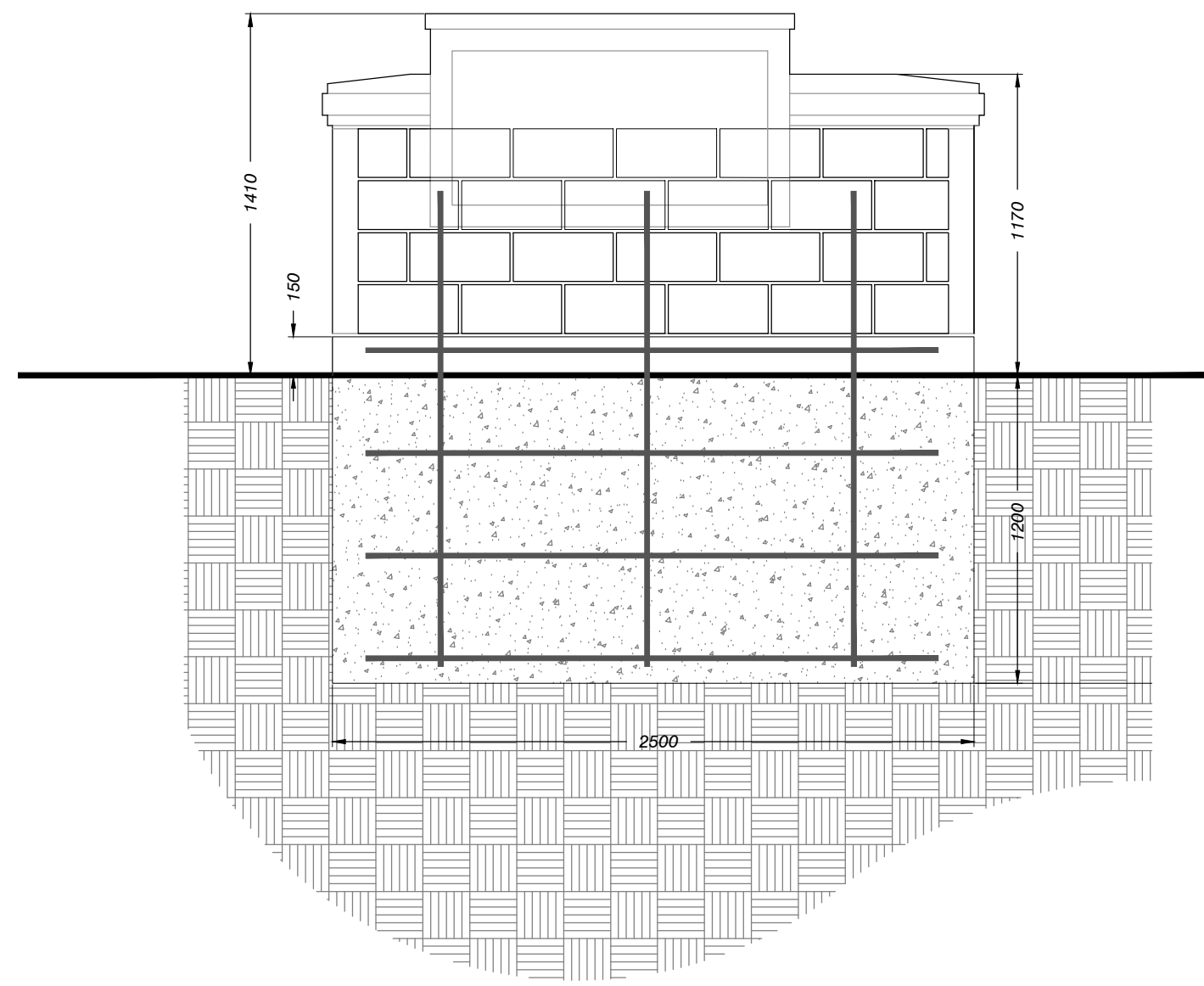
adesso design inc.
landscape architecture

218 Locke Street South, 2nd Floor
Hamilton, ON L8P 4B4
t. 905.526.8876
www.adessodesigninc.ca



- GENERAL CONCRETE NOTES:**
- Do concrete materials and methods of concrete construction in accordance with OPCS 351.
 - Contractor to verify accuracy of concrete details and reinforcement prior to installation.
 - Provide following materials:
 - cement: OPCS 905 and 1350;
 - aggregates for concrete: OPCS 905 and 1350;
 - reinforcing steel if detailed: OPCS 905 and 1350;
 - concrete form snap ties with plastic cones & breakback to be used. Surface patch as required;
 - form stripping agent: colorless mineral oil, free of kerosene;
 - latex bonding agent: Sikabond, Sikamix, or approved equal;
 - form lumber and plywood: clean, free of loose knots, splits and with repairs made smoothly and securely;
 - joint fillers: preformed, non-extruding, resilient bituminous type;
 - admixtures: to be used only when approved by Engineer;
 - aggregates for base: Granular A to OPCS form 1010;
 - water: water used in mixing or curing shall be reasonably clean and free of oil, salt, acid, alkali, sugar, vegetable matter or other substance injurious to the finished project and shall meet the requirement of OPCS.
 - Concrete mix to provide compressive strength of 28MPA at 28 days, entrained air of 6% to 1% and slump at point of discharge of 60mm for curb and footings.
 - Granular base to be compacted to 95% maximum dry density to OPCS and to depths as detailed.
 - Pour concrete in favourable weather conditions.
 - Apply surface finish as detailed.
 - Repair defective areas while concrete is still plastic, or remove defective work and replace with new concrete.
 - Concrete areas will not be accepted if:
 - fails to meet requirements of this specification;
 - contains excessive honeycombing or embedded debris;
 - 28 days average strength in any defined area is less than 95% of specified minimum strength;
 - surface irregularities;
 - damaged or chipped;
 - poor workmanship.
 - It is the contractor's responsibility to maintain and protect concrete areas until time of final acceptance.

- GENERAL NOTES:**
- Detail to be reviewed and approved by structural engineer prior to construction.
 - Top of footing elevation to be confirmed with landscape architect prior to construction.
 - Signage to be approved with landscape architect prior to installation.



Entry Feature
SCALE: AS SHOWN

NOT FOR CONSTRUCTION
ISSUED FOR REVIEW & COMMENTS ONLY

REVISIONS/ SUBMISSIONS

#	DATE	DESCRIPTION
1	2022-10-21	Issued for review
2	2022-11-11	Issued for review

STAMP

CLIENT
Culture Developments

MUNICIPALITY
Town of Fort Erie

PROJECT
The Canadian Block
Townhomes Development
272 Ridge Road Towns

MUNICIPAL FILE NUMBER

SHEET
Details

adesso design inc.
landscape architecture

218 Locke Street South, 2nd Floor
Hamilton, ON L8P 4B4
t: 905.526.8876
www.adessodesigninc.ca